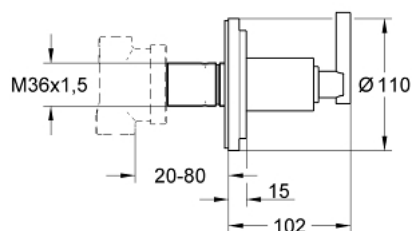


19 134 000 **ATRIO 5-WAY DIVERTER**

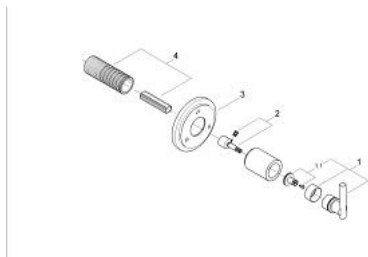


PRODUCT DESCRIPTION

- Colour: chrome
- set for final installation (for 29 708)
- without concealed body
- GROHE Long-Life finish
- escutcheon with wall sealing
- screwable
- with Jota handle



19 134 000 **ATRIO 5-WAY DIVERTER**



SPARE PARTS, January 2000 – now

1: Handle Jota (Spare part-nr. 45609000)

1.1: Replacement handle connection kit (Spare part-nr. 45605000)

2: Extension (Spare part-nr. 45611000)

3: Escutcheon (Spare part-nr. 45613000)

4: Extension (Spare part-nr. 45439000)