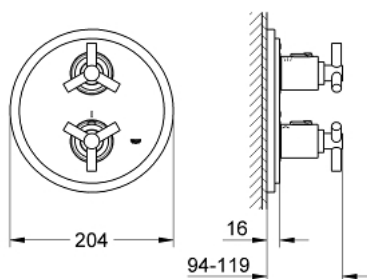


## 19 395 000 ATRIO THERMOSTAT WITH INTEGRATED 2-WAY DIVERTER FOR BATH OR SHOWER WITH MORE THAN ONE OUTLET

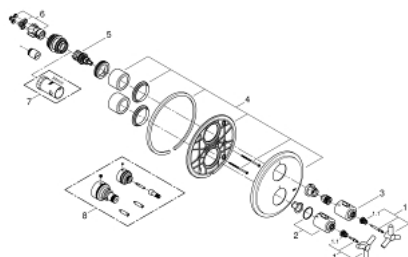


### PRODUCT DESCRIPTION

- Colour: chrome
- set for final installation for
- GROHE Rapido T 35 500 000
- without concealed body
- GROHE Long-Life finish
- GROHE SafeStop at 38°C
- Aquadimmer with multiple function
- shut off and flow control
- diverter for 2 outlets
- escutcheon- and shaft-sealing
- wall escutcheon
- covered fixing
- with Ypsilon handle



## 19 395 000 ATRIO THERMOSTAT WITH INTEGRATED 2-WAY DIVERTER FOR BATH OR SHOWER WITH MORE THAN ONE OUTLET



### SPARE PARTS, April 2014 – now

- 1: Handle Atrio Ypsilon (Spare part-nr. 47289000)
- 1.1: Repl. kit f.handle fastening (Spare part-nr. 08943000)
- 2: Scale handle (Spare part-nr. 06676000)
- 3: Handle for shut-off valve (Spare part-nr. 06654000)
- 4: Escutcheon (Spare part-nr. 47326000)
- 5: Aquadimmer (Spare part-nr. 47364000)
- 6: Adapter 3/4" x 1/2" (Spare part-nr. 12701000)
- 7: Socket spanner (Spare part-nr. 19332000)\*
- 8: Extension-set, 27,5 mm (Spare part-nr. 47781000)\*

\* Optional accessories