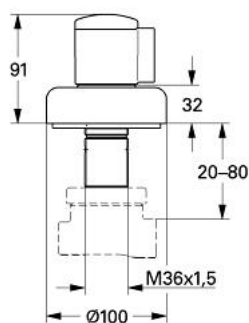


## 19 903 000 <P>2-WAY DIVERTER</P>

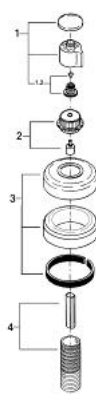


### PRODUCT DESCRIPTION

- Colour: chrome
- for use with diverter rough-in valve
- 29 712 000
- without concealed body
- escutcheon with wall sealing
- screwable
- 20-80 mm
- with handle
- GROHE Long-Life finish



## 19 903 000 <P>2-WAY DIVERTER</P>



### SPARE PARTS, January 1994 – now

- 1: Repl. kit f. diverter handle (Spare part-nr. 45649000)
- 1.1: Cap (Spare part-nr. 04180000)
- 1.2: Replacement handle connection kit (Spare part-nr. 45186000)
- 1.2.1: O-ring  $\varnothing 18.2 \times \varnothing 1.7$  (Spare part-nr. 0392400M)
- 2: Handle upper part (Spare part-nr. 45438000)
- 3: Escutcheon (Spare part-nr. 45433000)
- 4: Extension (Spare part-nr. 45439000)