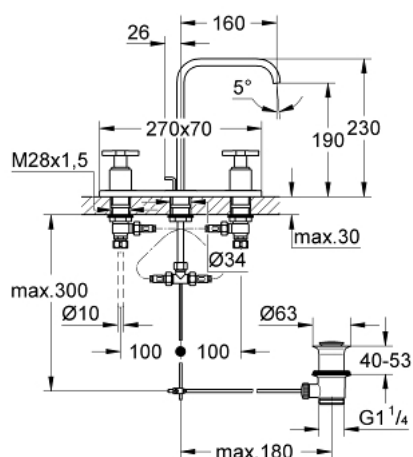


20 143 000 ALLURE 3-HOLE BASIN MIXER M-SIZE

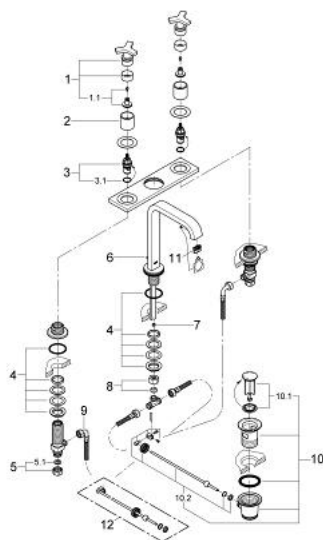


PRODUCT DESCRIPTION

- Colour: chrome
- with metal plate
- GROHE Long-Life finish
- Carbodur ceramic headpart 1/2", 180°
- flow limiter 8 l/min.
- spout with mousseur
- pop-up waste set 1 1/4"
- pressure-proof, flexible connection hoses between spout and side valves
- min. recommended pressure 1.0 bar



20 143 000 ALLURE 3-HOLE BASIN MIXER M-SIZE



SPARE PARTS, August 2008 – now

- 1: Handle (Spare part-nr. 46611000)
- 1.1: Replacement handle connection kit (Spare part-nr. 45605000)
- 2: Sleeve (Spare part-nr. 08124000)
- 3: Ceramic headpart, 1/2" (Spare part-nr. 45346000)
- 3.1: O-ring $\varnothing 18.2 \times \varnothing 1.7$ (Spare part-nr. 0392400M)
- 4: Shank fastening assembly (Spare part-nr. 45025000)
- 5: Coupling nut 1/2" x 10.5 mm (Spare part-nr. 1290100M)
- 5.1: Fibre seal dia. 12x2 mm (Spare part-nr. 0138900M)
- 6: Pop-up rod (Spare part-nr. 65196000)
- 7: Flow restrictor (Spare part-nr. 46324000)
- 8: Compression union 3/8" (Spare part-nr. 12914000)
- 9: Flexible connection hose (Spare part-nr. 45704000)
- 10: Pop-up waste set 1 1/4" (Spare part-nr. 28910000)
- 10.1: Plug (Spare part-nr. 07182000)
- 10.2: Eccentric rod (Spare part-nr. 07052000)
- 11: Mousseur (Spare part-nr. 13220000)
- 12: Eccentric rod (Spare part-nr. 07341000)*

* Optional accessories