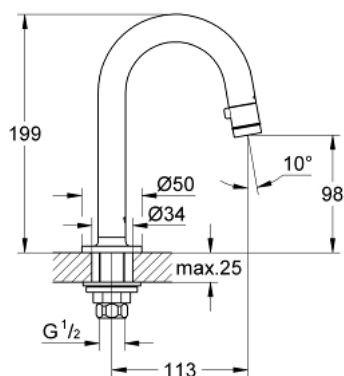


## 20 201 000 **UNIVERSAL PILLAR TAP 1/2"**

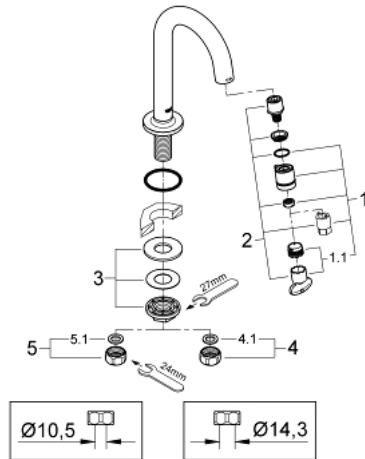


### PRODUCT DESCRIPTION

- Colour: chrome
- C-spout
- flow-stop mousseur
- ceramic disk headpart
- union nut 1/2"
- with 10.5 mm drilling
- GROHE Long-Life finish
- GROHE Water Saving - Less water, perfect flow
- maximum flow rate (at 3 bar): 5 l/min
- projection 113 mm



## 20 201 000 UNIVERSAL PILLAR TAP 1/2"



### SPARE PARTS, January 2010 – spareParts.validDate.now

1: Handle (Order-nr. 48041000)

1.1: Mousseur (Order-nr. 13998000)

2: Headpart (Order-nr. 48042000)

3: Shank mounting kit (Order-nr. 45004000)

4: Coupling nut 1/2" x 14.5 mm (Order-nr. 1290200M)

4.1: Fibre seal dia. 12x2 mm (Order-nr. 0138900M)

5: Coupling nut 1/2" x 10.5 mm (Order-nr. 1290100M)

5.1: Fibre seal dia. 12x2 mm (Order-nr. 0138900M)