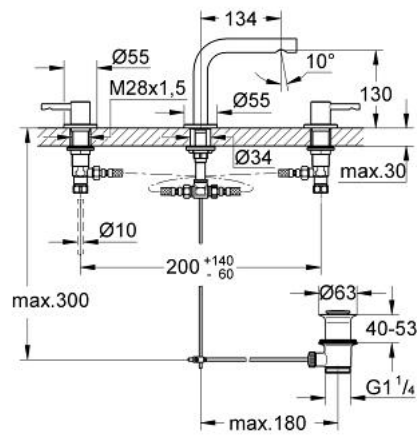


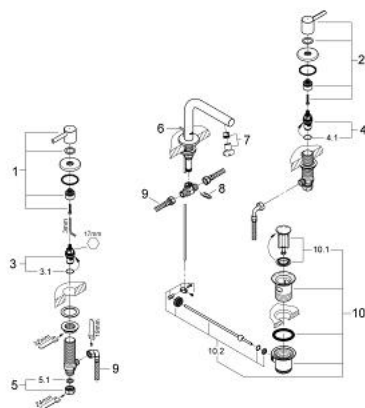
## 20 296 000 ESSENCE 3-HOLE BASIN MIXER S-SIZE



### PRODUCT DESCRIPTION

- Colour: chrome
- tubular spout
- integrated mousseur
- GROHE Long-Life finish
- ceramic headparts 1/2", 90°
- pop-up waste set 1 1/4"
- rapid installation system
- pressure-proof, flexible connection hoses between spout and side valves
- union nut with 10.5 mm drilling

## 20 296 000 ESSENCE 3-HOLE BASIN MIXER S-SIZE



### SPARE PARTS, August 2010 – now

- 1: Handle (Spare part-nr. 48105000)
- 2: Handle (Spare part-nr. 48106000)
- 3: Ceramic headpart, 1/2" (Spare part-nr. 45882000)
- 3.1: O-ring  $\varnothing 18.2 \times \varnothing 1.7$  (Spare part-nr. 0392400M)
- 4: Ceramic headpart, 1/2" (Spare part-nr. 45883000)
- 4.1: O-ring  $\varnothing 18.2 \times \varnothing 1.7$  (Spare part-nr. 0392400M)
- 5: Coupling nut 1/2" x 14.5 mm (Spare part-nr. 1290200M)
- 5.1: Fibre seal dia. 12x2 mm (Spare part-nr. 0138900M)
- 6: Pop-up rod (Spare part-nr. 65196000)
- 7: Mousseur (Spare part-nr. 13937000)
- 8: Fixing clamp (Spare part-nr. 6554100M)
- 9: Flexible connection hose (Spare part-nr. 45704000)
- 10: Pop-up waste set 1 1/4" (Spare part-nr. 28910000)
- 10.1: Plug (Spare part-nr. 07182000)
- 10.2: Eccentric rod (Spare part-nr. 07052000)