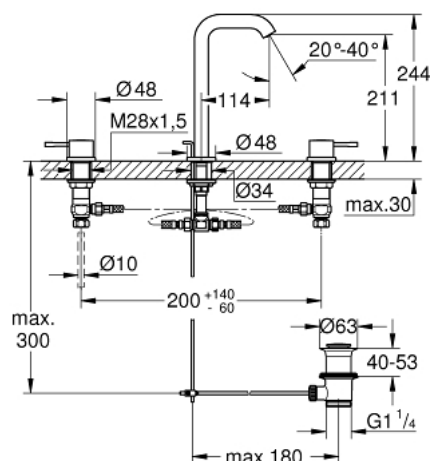




- Colour: chrome
- metal lever
- ceramic headparts 1/2", 90°
- GROHE Long-Life finish
- GROHE Water Saving mousseur 5.7 l/min
- GROHE FastFixation installation system
- GROHE AquaGuide adjustable mousseur
- pop-up waste set 1 1/4"
- pressure-proof, flexible connection hoses between spout and side valves
- min. recommended pressure 1.0 bar
- union nut 1/2" x 10.5 mm



20 299 001 ESSENCE THREE-HOLE BASIN MIXER L-SIZE



SPARE PARTS, January 2014 – now

- 1: Handle (Spare part-nr. 48272000)
 - 2: Handle (Spare part-nr. 48273000)
 - 3: Ceramic headpart, 1/2" (Spare part-nr. 45882000)
 - 3.1: O-ring $\varnothing 18.2 \times \varnothing 1.7$ (Spare part-nr. 0392400M)
 - 4: Ceramic headpart, 1/2" (Spare part-nr. 45883000)
 - 4.1: O-ring $\varnothing 18.2 \times \varnothing 1.7$ (Spare part-nr. 0392400M)
 - 5: Pop-up rod (Spare part-nr. 65196000)
 - 6: Mousseur (Spare part-nr. 48270000)
 - 7: Fixing clamp (Spare part-nr. 6554100M)
 - 8: Pop-up waste set 1 1/4" (Spare part-nr. 28910000)
 - 8.1: Plug (Spare part-nr. 07182000)
 - 8.2: Eccentric rod (Spare part-nr. 07052000)
 - 9: Coupling nut 1/2" x 10.5 mm (Spare part-nr. 1290100M)
 - 9.1: Fibre seal dia. 12x2 mm (Spare part-nr. 0138900M)
 - 10: Flexible connection hose (Spare part-nr. 45704000)
 - 11: Eccentric rod (Spare part-nr. 07341000)*
- * Optional accessories