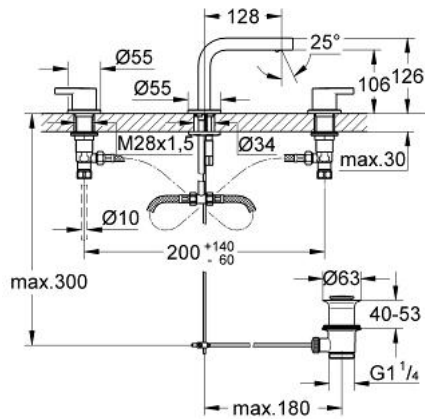


## 20 304 000 LINEARE\_ 3-HOLE BASIN MIXER S-SIZE

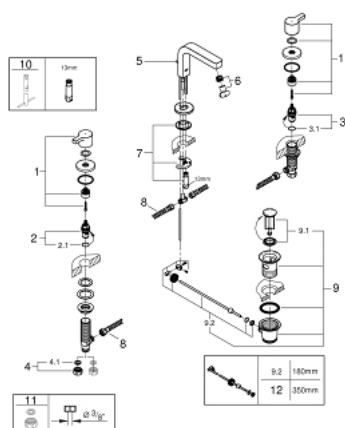


### PRODUCT DESCRIPTION

- Colour: chrome
- ceramic headparts 1/2", 90°
- GROHE Long-Life finish
- GROHE FastFixation installation system
- pop-up waste set 1 1/4"
- pressure-proof, flexible connection hoses between spout and side valves



## 20 304 000 LINEARE\_ 3-HOLE BASIN MIXER S-SIZE



### SPARE PARTS, May 2017 – now

- 1: Handle pair (Spare part-nr. 48316000)
- 2: Ceramic headpart, 1/2" (Spare part-nr. 45882000)
- 2.1: O-ring  $\varnothing 18.2 \times \varnothing 1.7$  (Spare part-nr. 0392400M)
- 3: Ceramic headpart, 1/2" (Spare part-nr. 45883000)
- 3.1: O-ring  $\varnothing 18.2 \times \varnothing 1.7$  (Spare part-nr. 0392400M)
- 4: Coupling nut 1/2" x 14.5 mm (Spare part-nr. 1290200M)
- 4.1: Fibre seal dia. 12x2 mm (Spare part-nr. 0138900M)
- 5: Pop-up rod (Spare part-nr. 65196000)
- 6: Mousseur (Spare part-nr. 13994000)
- 7: Shank mounting kit (Spare part-nr. 46671000)
- 8: Flexible hose (Spare part-nr. 45442000)
- 9: Pop-up waste set 1 1/4" (Spare part-nr. 28910000)
- 9.1: Plug (Spare part-nr. 07182000)
- 9.2: Eccentric rod (Spare part-nr. 07052000)
- 10: Mounting wrench (Spare part-nr. 19017000)\*
- 11: Coupling nut 1/2" x 10.5 mm (Spare part-nr. 1290100M)\*
- 12: Eccentric rod (Spare part-nr. 07341000)\*

\* Optional accessories