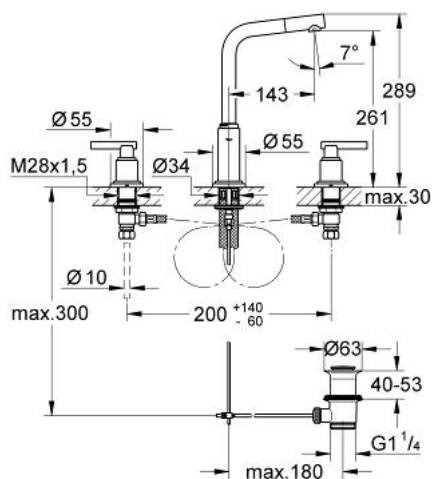


20 382 001 ATRIO 3-HOLE BASIN MIXER M-SIZE

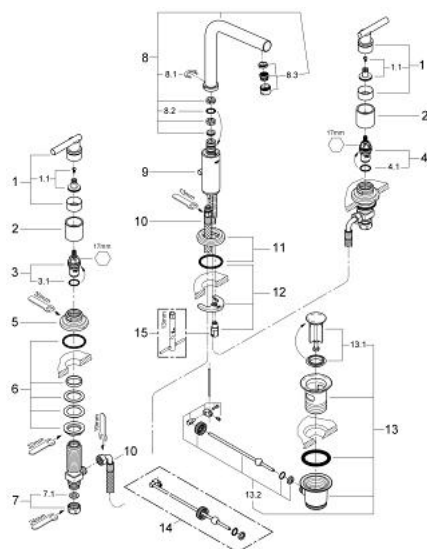


PRODUCT DESCRIPTION

- Colour: chrome
- swivel 7° tubular spout with mousseur and stop limiter
- ceramic headparts 1/2", 90°
- pop-up waste set 1 1/4"
- pressure-proof, flexible connection hoses between spout and side valves
- union nut with 10.5 mm drilling
- GROHE Long-Life finish



20 382 001 ATRIO 3-HOLE BASIN MIXER M-SIZE



SPARE PARTS, April 2011 – now

- 1: Handle Jota (Spare part-nr. 45609000)
- 1.1: Replacement handle connection kit (Spare part-nr. 45605000)
- 2: Sleeve (Spare part-nr. 08124000)
- 3: Ceramic headpart, 1/2" (Spare part-nr. 45882000)
- 3.1: O-ring $\varnothing 18.2 \times \varnothing 1.7$ (Spare part-nr. 0392400M)
- 4: Ceramic headpart, 1/2" (Spare part-nr. 45883000)
- 4.1: O-ring $\varnothing 18.2 \times \varnothing 1.7$ (Spare part-nr. 0392400M)
- 5: Escutcheon (Spare part-nr. 45630000)
- 6: Shank fastening assembly (Spare part-nr. 45025000)
- 7: Coupling nut 1/2" x 10.5 mm (Spare part-nr. 1290100M)
- 7.1: Fibre seal dia. 12x2 mm (Spare part-nr. 0138900M)
- 8: Spout (Spare part-nr. 13231000)
- 8.1: Safety ring (Spare part-nr. 0806500M)
- 8.2: Sealing washer (Spare part-nr. 0128500M)
- 8.3: Mousseur (Spare part-nr. 64186000)
- 9: Pop-up rod (Spare part-nr. 06575000)
- 10: Flexible hose (Spare part-nr. 45461000)
- 11: Escutcheon (Spare part-nr. 45629000)
- 12: Shank mounting kit (Spare part-nr. 46249000)
- 13: Pop-up waste set 1 1/4" (Spare part-nr. 28910000)
- 13.1: Plug (Spare part-nr. 07182000)
- 13.2: Eccentric rod (Spare part-nr. 07052000)
- 14: Eccentric rod (Spare part-nr. 07341000)*
- 15: Mounting wrench (Spare part-nr. 19017000)*

* Optional accessories