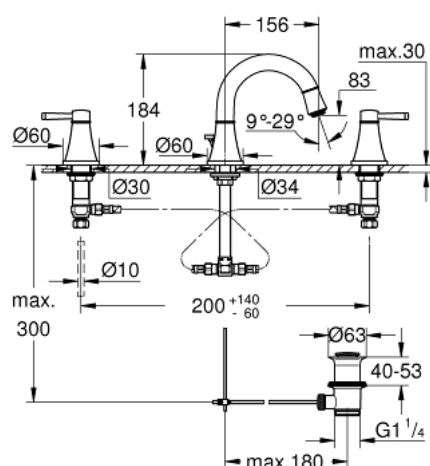
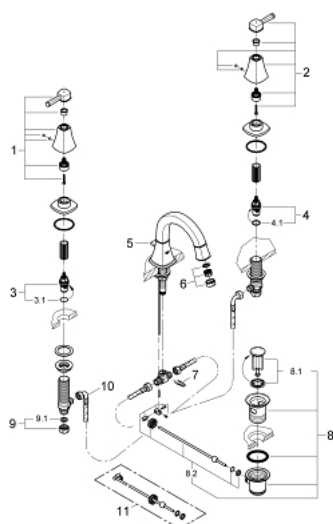


- Colour: chrome/gold
- valves hot/cold with ceramic headparts 1/2" - 90°
- GROHE Long-Life finish
- GROHE Water Saving - Less water, perfect flow
- GROHE AquaGuide adjustable mousseur 5.7 l/min
- pop-up waste set 1 1/4"
- pressure-proof, flexible connection hoses between spout and side valves
- min. recommended pressure 1.0 bar



20 417 IG0 GRANDERA 3-HOLE BASIN MIXER S-SIZE



SPARE PARTS, June 2012 – spareParts.validDate.now

- 1: Grandera handle red (Order-nr. 48198IG0)
 - 2: Grandera handle blue (Order-nr. 48199IG0)
 - 3: Ceramic headpart, 1/2" (Order-nr. 45882000)
 - 3.1: O-ring $\varnothing 18.2 \times \varnothing 1.7$ (Order-nr. 0392400M)
 - 4: Ceramic headpart, 1/2" (Order-nr. 45883000)
 - 4.1: O-ring $\varnothing 18.2 \times \varnothing 1.7$ (Order-nr. 0392400M)
 - 5: Lift rod (Order-nr. 48200000)
 - 6: Flow straightener (Order-nr. 46837G00)
 - 7: Fixing clamp (Order-nr. 6554100M)
 - 8: Pop-up waste set 1 1/4" (Order-nr. 28910000)
 - 8.1: Plug (Order-nr. 07182000)
 - 8.2: Eccentric rod (Order-nr. 07052000)
 - 9: Coupling nut 1/2" x 10.5 mm (Order-nr. 1290100M)
 - 9.1: Fibre seal dia. 12x2 mm (Order-nr. 0138900M)
 - 10: Flexible connection hose (Order-nr. 45704000)
 - 11: Eccentric rod (Order-nr. 07341000)*
- * Optional accessories