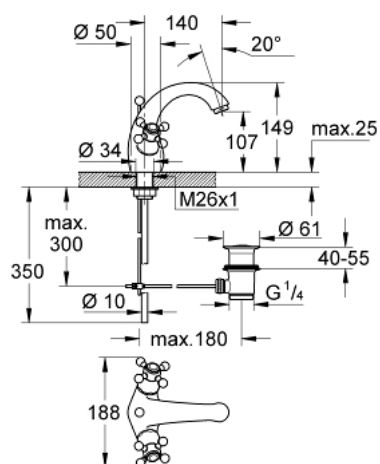
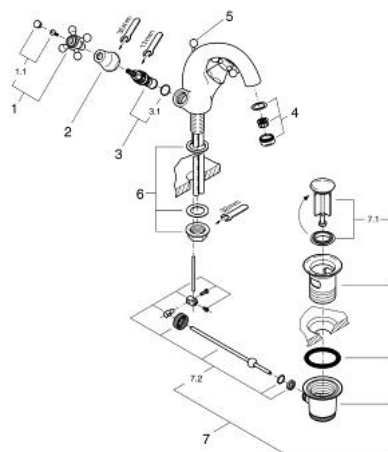


- Colour: chrome/gold
- Carbidur ceramic headparts 1/2", 180°
- fastened cast spout with mousseur
- projection 130 mm
- pop-up waste set 1 1/4"
- with cross handles
- copper pipes
- GROHE Long-Life finish



21 012 IG0 SINFONIA SINGLE-HOLE BASIN MIXER



SPARE PARTS, January 2000 – now

- 1: Sinfonia cross handles (Spare part-nr. 45291IG0)
- 1.1: Marking piece (Spare part-nr. 45305000)
- 2: Cap (Spare part-nr. 00061000)
- 3: Ceramic headpart, 1/2" (Spare part-nr. 45346000)
- 3.1: O-ring $\varnothing 18.2 \times \varnothing 1.7$ (Spare part-nr. 0392400M)
- 4: Mousseur (Spare part-nr. 13929G00)
- 5: Pop-up rod (Spare part-nr. 07511IG0)
- 6: Shank fastening assembly (Spare part-nr. 45012000)
- 7: Pop-up waste set 1 1/4" (Spare part-nr. 28910IG0)
- 7.1: Plug (Spare part-nr. 07182G00)
- 7.2: Eccentric rod (Spare part-nr. 07052000)