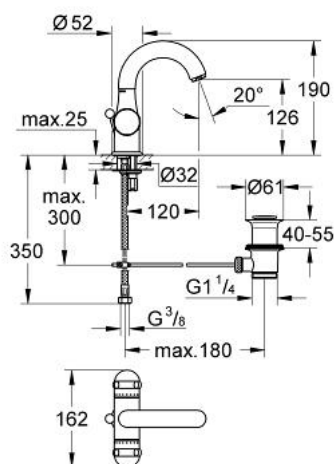


21 106 000 SENTOSA SINGLE-HOLE BASIN MIXER

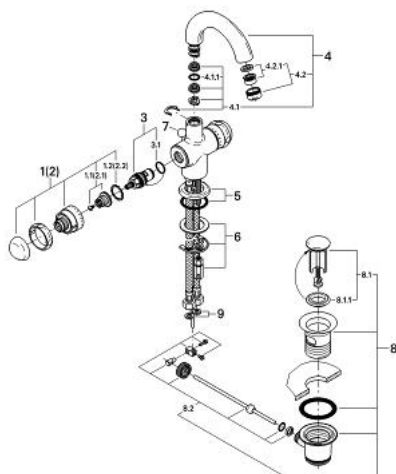


PRODUCT DESCRIPTION

- Colour: chrome
- Carbodur ceramic headparts 1/2", 180°
- swivel tubular spout with mousseur and stop limiter
- pop-up waste set 1 1/4"
- flexible connection hoses
- rapid installation system
- GROHE Long-Life finish



21 106 000 SENTOSA SINGLE-HOLE BASIN MIXER



SPARE PARTS, January 1993 – spareParts.validDate.now

- 1: Sentosa handle 1/2" red (Order-nr. 45539IP0)
- 1.1: Replacement handle connection kit (Order-nr. 45186000)
- 1.1.1: O-ring $\varnothing 18.2 \times \varnothing 1.7$ (Order-nr. 0392400M)
- 1.2: Guide ring (Order-nr. 0202100M)
- 2: Sentosa handle 1/2" (Order-nr. 45538IP0)
- 2.1: Replacement handle connection kit (Order-nr. 45186000)
- 2.2: Guide ring (Order-nr. 0202100M)
- 3: Ceramic headpart, 1/2" (Order-nr. 45346000)
- 3.1: O-ring $\varnothing 18.2 \times \varnothing 1.7$ (Order-nr. 0392400M)
- 4: Cast swivel spout (Order-nr. 13014000)
- 4.1: Sealing washer (Order-nr. 0128500M)
- 4.2: Safety ring (Order-nr. 0485300M)
- 4.3: Mousseur (Order-nr. 13929000)
- 5: Escutcheon (Order-nr. 45540000)
- 6: Shank mounting kit (Order-nr. 46249000)
- 7: Pop-up rod (Order-nr. 45541P00)
- 8: Pop-up waste set 1 1/4" (Order-nr. 28910000)
- 8.1: Plug (Order-nr. 07182000)
- 8.2: Eccentric rod (Order-nr. 07052000)
- 9: Fibre seal $\varnothing 14.5 \times \varnothing 8 \times 2$ (Order-nr. 0138300M)