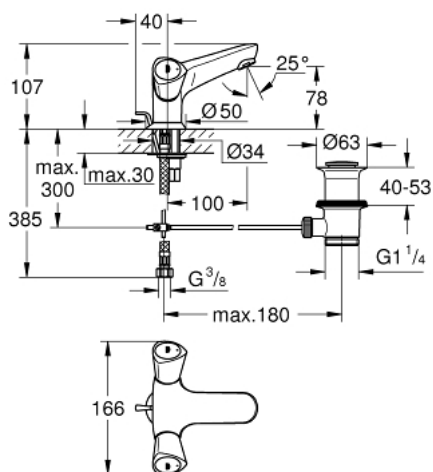


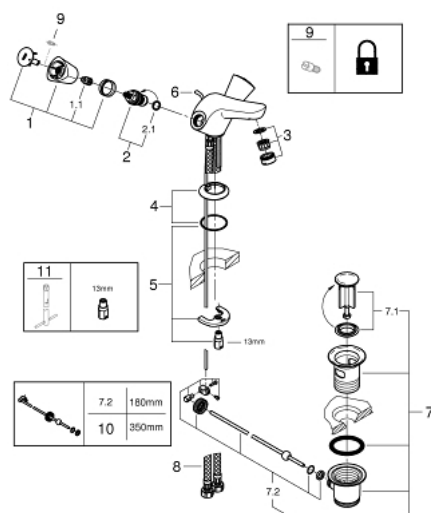
## 21 255 001 **COSTA S SINGLE-HOLE BASIN MIXER**



### PRODUCT DESCRIPTION

- Colour: chrome
- metal handles
- heat-insulated
- screwable
- Carbodur headpart
- cast spout with mousseur
- pop-up waste set 1 1/4"
- flexible connection hoses
- GROHE Long-Life finish

## 21 255 001 **COSTA S SINGLE-HOLE BASIN MIXER**



### **SPARE PARTS**, August 2016 – spareParts.validDate.now

- 1: Handle (Order-nr. 45995000)
- 1.1: Repl. kit f.handle fastening (Order-nr. 0538600M)
- 2: Ceramic headpart, 1/2" (Order-nr. 45346000)
- 2.1: O-ring  $\varnothing 18.2 \times \varnothing 1.7$  (Order-nr. 0392400M)
- 3: Mousseur (Order-nr. 13929000)
- 4: Escutcheon (Order-nr. 48004000)
- 5: Shank mounting kit (Order-nr. 46249000)
- 6: Lift rod (Order-nr. 65936PD0)
- 7: Pop-up waste set 1 1/4" (Order-nr. 28910000)
- 7.1: Plug (Order-nr. 07182000)
- 7.2: Eccentric rod (Order-nr. 07052000)
- 8: Connection hose (Order-nr. 46255000)
- 9: Screw for Costa/Avina products (Order-nr. 48013000)\*
- 10: Eccentric rod (Order-nr. 07341000)\*
- 11: Mounting wrench (Order-nr. 19017000)\*

\* Optional accessories