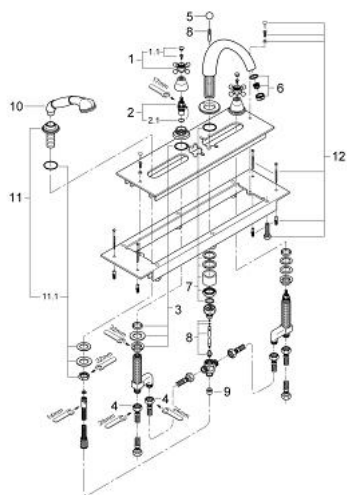


- Colour: chrome/gold
- Carbodur ceramic headparts 1/2", 180°
- high bath inlet
- bath inlet with manual diverter bath/shower
- projection 202 mm
- mousseur
- mounting plate and base frame
- hose guide with hand shower set
- pressure-proof, flexible connection hoses
- with cross handles
- protected against backflow
- GROHE Long-Life finish

25 033 IG0 SINFONIA 4-HOLE BATH/SHOWER COMBINATION



SPARE PARTS, September 2007 – spareParts.validDate.now

- 1: Sinfonia cross handles (Order-nr. 45291IG0)
- 1.1: Marking piece (Order-nr. 45305000)
- 2: Ceramic headpart, 1/2" (Order-nr. 45346000)
- 2.1: O-ring $\varnothing 18.2 \times \varnothing 1.7$ (Order-nr. 0392400M)
- 3: Shank fastening assembly (Order-nr. 45025000)
- 4: Tube (Order-nr. 07227000)
- 5: Pop-up rod head (Order-nr. 04667G00)
- 6: Mousseur (Order-nr. 13927G00)
- 7: Shank mounting kit (Order-nr. 46078000)
- 8: Diverter (Order-nr. 45548000)
- 9: Non-return valve (Order-nr. 08565000)
- 10: Handshower (Order-nr. 07633IG0)
- 11: Spray holder (Order-nr. 07629IG0)
- 11.1: Shank mounting kit (Order-nr. 07660000)
- 12: Fixing set (Order-nr. 07007000)