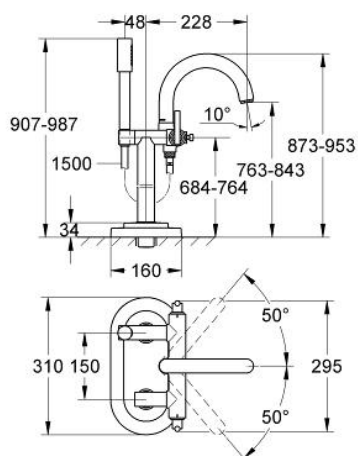


25 046 000 ATRIO BATH/SHOWER MIXER

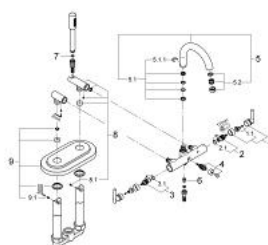


PRODUCT DESCRIPTION

- Colour: chrome
- floor-mounted installation with high pillar unions (765 mm)
- ceramic headparts 1/2", 90°
- automatic diverter: bath/shower
- swivel tubular spout with mousseur and stop limiter
- projection 228 mm
- integrated non-return valve in the shower outlet 1/2"
- with shower holder
- Sena hand shower
- shower hose 1500 mm
- protected against backflow
- with Jota handle
- to be used with
- 45 473
- without roughing-in-set
- GROHE Long-Life finish



25 046 000 ATRIO BATH/SHOWER MIXER



SPARE PARTS, November 2007 – now

- 1: Handle Jota (Spare part-nr. 45609000)
- 1.1: Replacement handle connection kit (Spare part-nr. 45605000)
- 2: Ceramic headpart, 1/2" (Spare part-nr. 45882000)
- 2.1: O-ring $\varnothing 18.2 \times \varnothing 1.7$ (Spare part-nr. 0392400M)
- 3: Ceramic headpart, 1/2" (Spare part-nr. 45883000)
- 3.1: O-ring $\varnothing 18.2 \times \varnothing 1.7$ (Spare part-nr. 0392400M)
- 4: Diverter (Spare part-nr. 45592000)
- 5: Spout (Spare part-nr. 45857000)
- 5.1: Repl.kit f.cast spout (Spare part-nr. 45474000)
- 5.1.1: Safety washer (Spare part-nr. 0585000M)
- 5.2: Mousseur (Spare part-nr. 13939000)
- 6: Non-return valve (Spare part-nr. 08565000)
- 7: Dirt strainer (Spare part-nr. 0700200M)
- 8: Shower holder (Spare part-nr. 45861000)
- 8.1: Thread pin (Spare part-nr. 0311700M)
- 9: Escutcheon (Spare part-nr. 45873000)
- 9.1: Thread pin (Spare part-nr. 0311700M)