

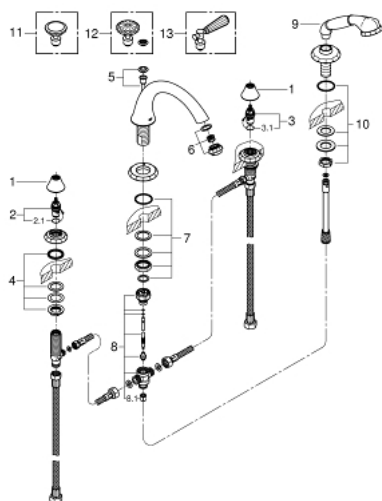
25 073 000 **KENSINGTON 4-HOLE BATH/SHOWER COMBINATION**



PRODUCT DESCRIPTION

- Colour: chrome
- without handles
- consisting of:
- diverter bath spout with mousseur
- side valves
- ceramic headparts 1/2", 90°
- hand shower
- shower hose
- shower hose 2000 mm
- 2000 mm
- pressure-proof, flexible connection hoses between spout and side valves
- GROHE Long-Life finish
- round handles 18 086 000 & 18 086 EN0 (sold separately)
- Swarovski Crystal Handles 18 086 VP0 (sold separately)
- lever handles 18 087 000 & 18 087 EN0 (sold separately)

25 073 000 KENSINGTON 4-HOLE BATH/SHOWER COMBINATION



SPARE PARTS, February 2017 – now

- 1: Shield (Spare part-nr. 45907000)
- 2: Ceramic headpart, 1/2" (Spare part-nr. 45882000)
- 2.1: O-ring $\varnothing 18.2 \times \varnothing 1.7$ (Spare part-nr. 0392400M)
- 3: Ceramic headpart, 1/2" (Spare part-nr. 45883000)
- 3.1: O-ring $\varnothing 18.2 \times \varnothing 1.7$ (Spare part-nr. 0392400M)
- 4: Shank fastening assembly (Spare part-nr. 45025000)
- 5: Pop-up rod (Spare part-nr. 45875000)
- 6: Sistra (Spare part-nr. 13991000)
- 7: Shank mounting kit (Spare part-nr. 46078000)
- 8: Diverter (Spare part-nr. 45470000)
- 8.1: Non-return valve (Spare part-nr. 08565000)
- 9: handshower (Spare part-nr. 45912000)
- 10: Shank mounting kit (Spare part-nr. 07660000)
- 11: Crystal handle (Spare part-nr. 18086000)*
- 12: Crystal handle (Spare part-nr. 18086VP0)*
- 13: Lever Handle (Spare part-nr. 18087000)*

* Optional accessories