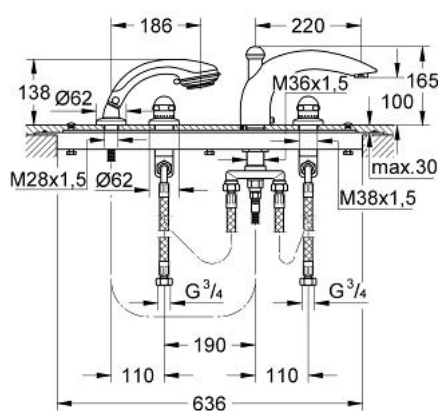


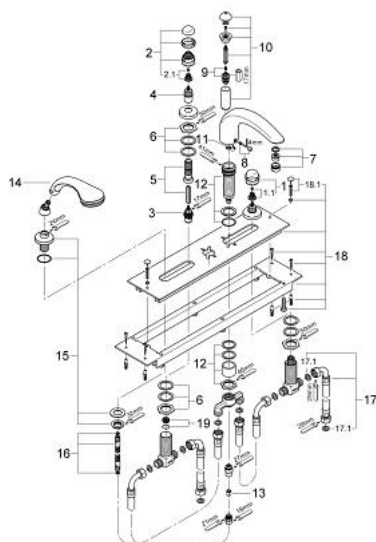
## 25 551 000 **SENTOSA 4-HOLE BATH/SHOWER COMBINATION**



### PRODUCT DESCRIPTION

- Colour: chrome
- bath inlet with automatic diverter
- mousseur
- 2 concealed valves with ceramic headparts 180° 3/4"
- mounting plate and base frame
- hand shower Relexa Cosmopolitan with Champagne spray (28 237)
- metal shower hose
- connection hoses 600 mm 3/4" x 3/4"
- protected against backflow
- GROHE Long-Life finish

## 25 551 000 SENTOSA 4-HOLE BATH/SHOWER COMBINATION



### SPARE PARTS, January 1994 – April 2006

- 1: Sentosa handle 1/2" (Order-nr. 45538IP0)
- 1.1: Replacement handle connection kit (Order-nr. 45186000)
- 1.1.1: O-ring  $\varnothing 18.2 \times \varnothing 1.7$  (Order-nr. 0392400M)
- 1.2: Guide ring (Order-nr. 0202100M)
- 2: Sentosa handle 1/2" red (Order-nr. 45539IP0)
- 2.1: Replacement handle connection kit (Order-nr. 45186000)
- 2.2: Guide ring (Order-nr. 0202100M)
- 3: Ceramic headpart 3/4", 180° (Order-nr. 45885000)
- 3.1: O-ring (Order-nr. 45583000)
- 4: Extension (Order-nr. 45204000)
- 5: Extension 20-80 (Order-nr. 45202000)
- 6: Escutcheon (Order-nr. 05042000)
- 7: Repl.kit f.shank fastening 3/4" (Order-nr. 45444000)
- 8: Sistra (Order-nr. 13907000)
- 8.1: Repl.kit f. Sistra M28x1 (Order-nr. 45047000)
- 9: Repl.kit f.cast spout (Order-nr. 45834000)
- 10: Diverter (Order-nr. 45187000)
- 11: Diverter knob (Order-nr. 45835000)
- 12: O-ring 12 x 3 (Order-nr. 0127800M)
- 13: Repl.kit f.spout shank (Order-nr. 45456000)
- 14: Non-return valve (Order-nr. 08565000)
- 15: Hand shower 2 sprays (Order-nr. 28174000)
- 15.1: Coupling piece (Order-nr. 28635XX0)
- 15.2: Dirt strainer (Order-nr. 0700200M)
- 16: Coupling piece (Order-nr. 47318000)
- 16.1: O-ring  $\varnothing 11 \times \varnothing 2$  (Order-nr. 0122400M)
- 17: Spray holder (Order-nr. 45836IX0)
- 17.1: Hose sealing (Order-nr. 45412XX0)
- 18: Metal hose (Order-nr. 28146000)
- 19: Flexible hose (Order-nr. 45446000)
- 19.1: Ball seal dia. 9x6.8 mm (Order-nr. 0138600M)
- 20: Mounting frame (Order-nr. 45051000)
- 20.1: Fixing set (Order-nr. 45172000)
- 21: Seat 3/4" (Order-nr. 45345000)