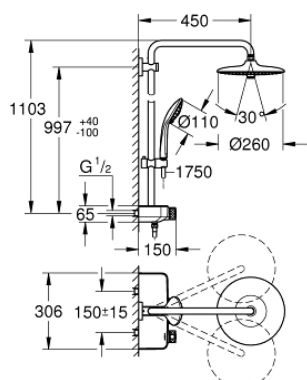


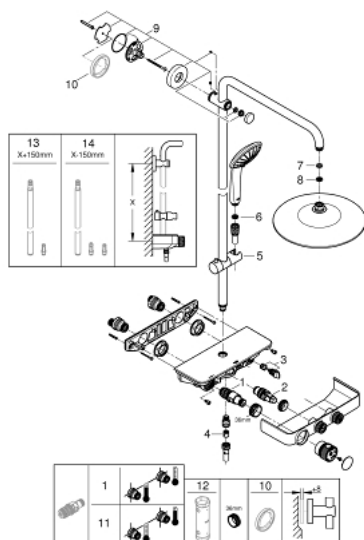
## 26 509 000 EUPHORIA SMARTCONTROL SYSTEM 260 MONO SHOWER SYSTEM WITH THERMOSTAT FOR WALL MOUNTING



### PRODUCT DESCRIPTION

- Colour: chrome
- consisting of:
  - horizontal 450 mm shower arm
  - upper bracket adjustable for minimal adaption to existing drilling holes
  - exposed SmartControl thermostat
  - allows change between:
    - head shower Euphoria 260 (26 455)
  - 3 spray patterns:
    - Rain, SmartRain, Jet
  - with ball joint
  - rotation angle  $\pm 15^\circ$
  - hand shower Euphoria 110 Massage, spray plate white (27 221 001)
    - 3 spray patterns:
      - Rain, SmartRain, Massage
    - adjustable in height with gliding element
  - Silverflex shower hose 1750 mm (28 388 000)
  - GROHE DreamSpray perfect spray pattern
  - GROHE Long-Life finish
  - GROHE CoolTouch no risk of scalding
  - GROHE TurboStat compact cartridge with wax thermoelement
  - GROHE ProGrip with knurl structure
  - GROHE Water Saving - Less water, perfect flow
  - - GROHE SafeStop at 38°C
  - GROHE SafeStop Plus optional temperature limiter at 43°C included
  - SmartControl push for ON-OFF, turn for volume adjustment from GROHE Water Saving to Full Flow
  - integrated GROHE EasyReach shower tray
  - SpeedClean anti-lime system
  - Inner WaterGuide for a longer life
  - TwistStop to prevent hose from twisting
  - suitable for instantaneous heaters from 18 kW/h
  - minimum flow rate 7 l/min.

## 26 509 000 EUPHORIA SMARTCONTROL SYSTEM 260 MONO SHOWER SYSTEM WITH THERMOSTAT FOR WALL MOUNTING



### SPARE PARTS, February 2019 – March 2021

- 1: Thermostatic compact cartridge 1/2" (Order-nr. 47439000)
  - 2: Cartridge (Order-nr. 48297000)
  - 3: Non-return valve (Order-nr. 49069000)
  - 4: Non-return valve (Order-nr. 08565000)
  - 5: Sliding piece (Order-nr. 48177000)
  - 6: Dirt strainer (Order-nr. 0700200M)
  - 7: Fibre seal dia. 12x2 mm (Order-nr. 0138900M)
  - 8: Dirt strainer (Order-nr. 48007000)
  - 9: Outlet shower holder (Order-nr. 48279000)
  - 10: Compensation disc (Order-nr. 27180000)\*
  - 11: GROHE TurboStat cartridge 1/2" (Order-nr. 47175000)\*
  - 12: Socket spanner (Order-nr. 49059000)\*
  - 13: Shower system pipe for retrofitting (Order-nr. 48499000)\*
  - 14: Shower system pipe for retrofitting (Order-nr. 48498000)\*
- \* Optional accessories