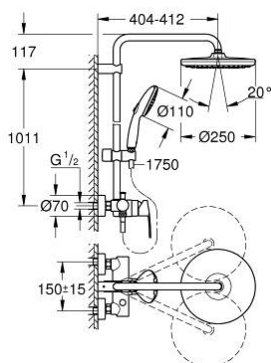
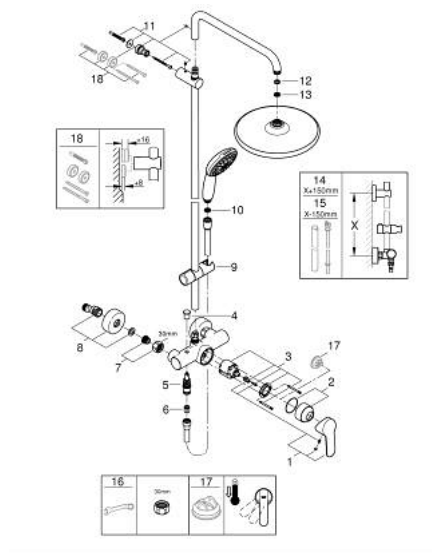


## A modern, chrome-finished shower system. It features a large, circular overhead rain showerhead mounted on a curved arm. A vertical bar supports a handheld showerhead. The system is controlled by a wall-mounted valve with a lever handle. A flexible hose connects the valve to the handheld showerhead.



- Colour: chrome
- consisting of:
- horizontal swivable 390 mm shower arm
- exposed single-lever shower mixer with diverter
- allows change between:
- head shower Tempesta 250 (26 666)
- spray pattern:
- Rain
- head shower with white rear cover
- with ball joint
- rotation angle  $\pm 10^\circ$
- hand shower Tempesta 110 (27 597)
- 2 spray patterns:
- Rain, Jet
- adjustable in height with gliding element
- Rotaflex TwistStop shower hose 1.750 mm 1/2" x 1/2" (28 410)
- maximum flow rate (at 3 bar): 7.3 l/min
- GROHE Water Saving - Less water, perfect flow
- GROHE SilkMove 46 mm ceramic cartridge
- GROHE SmartSwitch - easily rotate the dial to enjoy your preferred spray option
- GROHE DreamSpray perfect spray pattern
- ShockProof silicone ring prevents damages caused by shower falling
- GROHE Long-Life finish
- SpeedClean anti-lime system
- Inner WaterGuide for a longer life
- TwistStop to prevent hose from twisting
- suitable for instantaneous heaters from 18 kW/h
- minimum flow rate 7 l/min.
- min. recommended pressure 1.0 bar
- professional edition

## 26 673 001 TEMPESTA SYSTEM 250 SHOWER SYSTEM WITH SINGLE LEVER MIXER FOR WALL MOUNTING



### SPARE PARTS, November 2021 – now

- 1: Lever (Spare part-nr. 46726000)
- 2: Shield (Spare part-nr. 46025000)
- 3: Cartridge (Spare part-nr. 46048000)
- 4: Diverter knob (Spare part-nr. 65648000)
- 5: Diverter (Spare part-nr. 65655000)
- 6: Non-return valve (Spare part-nr. 08565000)
- 7: Screw joint (Spare part-nr. 45044000)
- 8: S-union (Spare part-nr. 12662000)
- 9: Sliding piece (Spare part-nr. 48609000)
- 10: Dirt strainer (Spare part-nr. 0700200M)
- 11: Outlet shower holder (Spare part-nr. 48423000)
- 12: Fibre seal dia. 12x2 mm (Spare part-nr. 0138900M)
- 13: Dirt strainer (Spare part-nr. 48007000)
- 14: Shower system pipe for retrofitting (Spare part-nr. 48514000)\*
- 15: Shower system pipe for retrofitting (Spare part-nr. 48515000)\*
- 16: Special spanner (Spare part-nr. 19377000)\*
- 17: Temperature limiter (Spare part-nr. 46375000)\*
- 18: Compensation disc (Spare part-nr. 26496000)\*

\* Optional accessories