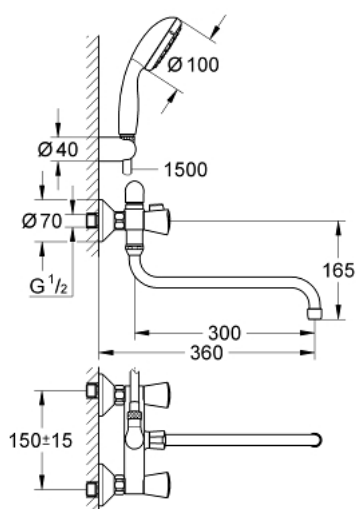


26 792 001 **COSTA S MULTI-PURPOSE MIXER**

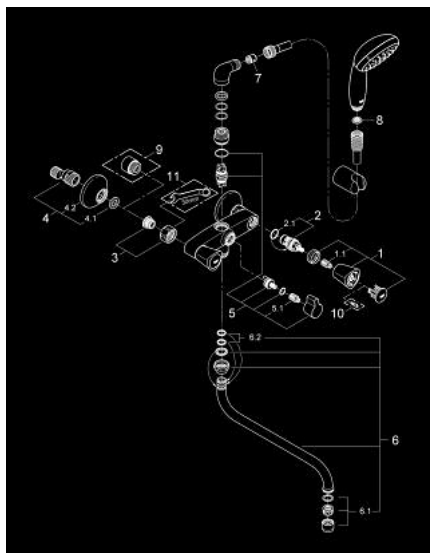


PRODUCT DESCRIPTION

- Colour: chrome
- wall mounted
- metal handles
- heat-insulated
- screwable
- Carbodur headpart
- diverter bath/shower
- S-unions
- connection angle 3/4" x 3/4" (12 419)
- spout 300 mm (13 017)
- hand shower Tempesta 100, 1 spray, 9.5 l/min (27 923 000)
- shower hose Relaxaflex 1500 mm 1/2" x 1/2" (28 151)
- wall shower holder (28 605)
- GROHE Long-Life finish



26 792 001 **COSTA S MULTI-PURPOSE MIXER**



SPARE PARTS, October 2013 – now

- 1: Handle (Spare part-nr. 45995000)
- 1.1: Repl. kit f.handle fastening (Spare part-nr. 0538600M)
- 2: Ceramic headpart, 1/2" (Spare part-nr. 45346000)
- 2.1: O-ring $\varnothing 18.2 \times \varnothing 1.7$ (Spare part-nr. 0392400M)
- 3: Screw joint (Spare part-nr. 45044000)
- 4: S-union (Spare part-nr. 12075000)
- 4.1: Ball seal dia. 9x6.8 mm (Spare part-nr. 0138600M)
- 4.2: Escutcheon (Spare part-nr. 0221000M)
- 5: Repl.kit f.rotary valve (Spare part-nr. 48006000)
- 5.1: Repl. kit f.handle fastening (Spare part-nr. 0538600M)
- 6: Swivel tube spout (Spare part-nr. 13017000)
- 6.1: Mousseur (Spare part-nr. 13928000)
- 6.2: Sealing washer (Spare part-nr. 0128500M)
- 7: Non-return valve (Spare part-nr. 08565000)
- 8: Dirt strainer (Spare part-nr. 0700200M)
- 9: Extension 3/4", 20 mm (Spare part-nr. 0713000M)*
- 10: Screw for Costa/Avina products (Spare part-nr. 48013000)*
- 11: Special spanner (Spare part-nr. 19377000)*

* Optional accessories