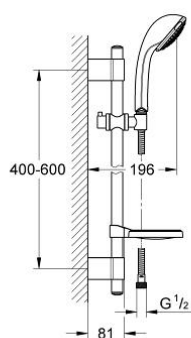


## 27 132 001 RELEXA 100 TRIO SHOWER RAIL SET 3 SPRAYS

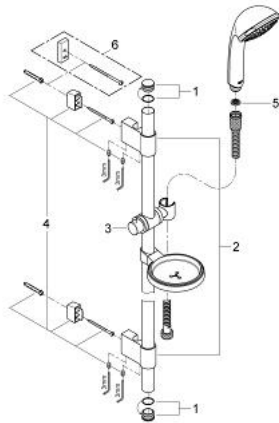


### PRODUCT DESCRIPTION

- Colour: chrome
- consisting of:
  - shower rail, 600 mm (28 797)
  - GROHE FastFixation Plus installation system
  - with wall holders made of metal
  - hand shower Relexa 100 Trio (28 793 000)
  - Rotaflex TwistStop shower hose 1.750 mm 1/2" x 1/2" (28 410)
  - soap dish (27 177)
- GROHE DreamSpray perfect spray pattern
- Inner WaterGuide for a longer life
- GROHE Long-Life finish
- SpeedClean anti-lime system
- TwistStop to prevent hose from twisting
- GROHE FastFixation Plus adjustable distance between brackets for adaption to existing drilling holes



## 27 132 001 RELEXA 100 TRIO SHOWER RAIL SET 3 SPRAYS



### SPARE PARTS, October 2009 – now

- 1: Cap (Spare part-nr. 45922000)
- 2: Outlet shower holder (Spare part-nr. 0666700M)
- 3: Sliding piece (Spare part-nr. 06765000)
- 4: Fixing set (Spare part-nr. 45403000)
- 5: Dirt strainer (Spare part-nr. 0700200M)
- 6: Compensation disc (Spare part-nr. 45914XE0)\*

\* Optional accessories