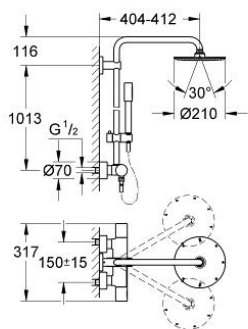


## 27 418 000 RAINSHOWER SYSTEM 210 SHOWER SYSTEM WITH THERMOSTAT FOR WALL MOUNTING

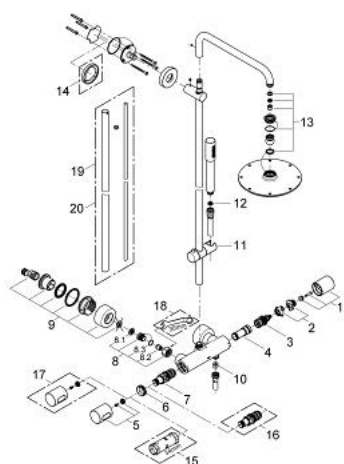


### PRODUCT DESCRIPTION

- Colour: chrome
- consisting of:
- exposed thermostat with Aquadimmer function
- allows change between:
- Rainshower Cosmopolitan 210 metal head shower (28 368 000)
- horizontal swivable 390 mm shower arm
- with ball joint
- rotation angle  $\pm 20^\circ$
- hand shower Sena Stick (28 034 000)
- adjustable in height with gliding element (12 140 000)
- metal shower hose 1750 mm
- minimum flow rate 7 l/min.
- GROHE Water Saving - Less water, perfect flow
- GROHE Long-Life finish
- GROHE CoolTouch
- suitable for instantaneous heaters from 18 kW/h



## 27 418 000 RAINSHOWER SYSTEM 210 SHOWER SYSTEM WITH THERMOSTAT FOR WALL MOUNTING



### SPARE PARTS, May 2013 – spareParts.validDate.now

- 1: Aquadimmer handle (Order-nr. 47804000)
  - 2: Temperature limiter (Order-nr. 47723000)
  - 3: Aquadimmer (Order-nr. 47364000)
  - 4: Water flow (Order-nr. 47887000)
  - 5: Handle (Order-nr. 47803000)
  - 6: Fitting ring (Order-nr. 47743000)
  - 7: Thermostatic compact cartridge 1/2" (Order-nr. 47439000)
  - 8: Non-return valve (Order-nr. 47189000)
  - 8.1: Dirt Strainer (Order-nr. 0726400M)
  - 8.2: Non-return valve (Order-nr. 08565000)
  - 8.3: O-ring  $\varnothing 17 \times \varnothing 2$  (Order-nr. 0305500M)
  - 9: S-union (Order-nr. 12693000)
  - 10: Non-return valve (Order-nr. 08565000)
  - 11: Sliding piece (Order-nr. 12140000)
  - 12: Dirt strainer (Order-nr. 0700200M)
  - 13: Inlet valve assembly (Order-nr. 45933000)
  - 14: Compensation disc (Order-nr. 27180000)\*
  - 15: Socket spanner (Order-nr. 19332000)\*
  - 16: GROHE TurboStat cartridge 1/2" (Order-nr. 47175000)\*
  - 17: Scale handle (Order-nr. 47811000)\*
  - 18: Special spanner (Order-nr. 19377000)\*
  - 19: Shower system pipe for retrofitting (Order-nr. 48053000)\*
  - 20: Shower system pipe for retrofitting (Order-nr. 48054000)\*
- \* Optional accessories