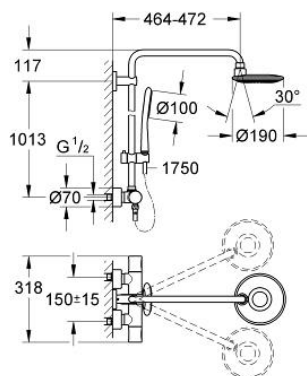
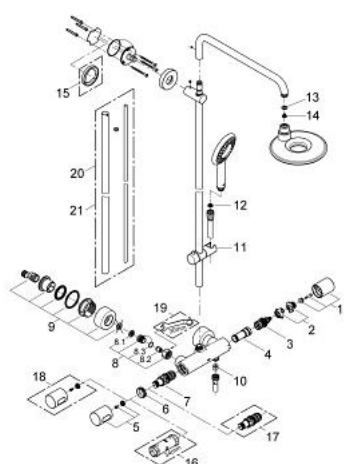


A modern, chrome-finished shower system. It features a large, square overhead rain showerhead mounted on a curved arm. A handheld showerhead is attached to a vertical sliding bar. At the base, there is a thermostatic mixer tap with a digital display and buttons for temperature and pressure control. The entire system is made of polished chrome and is set against a plain white background.

- Colour: chrome
- consisting of:
- horizontal swivable 450 mm shower arm
- exposed thermostat with Aquadimmer function
- allows change between:
- head shower Icon (27 439 000)
- chrome plated spray plate
- with ball joint
- rotation angle $\pm 15^\circ$
- hand shower Icon 100 (27 377 000)
- adjustable in height with gliding element (12 140 000)
- 9.5 l/min. flow limiter
- Silverflex shower hose 1750 mm 1/2" x 1/2" (28 388 000)
- minimum flow rate 7 l/min.
- GROHE Water Saving - Less water, perfect flow
- GROHE DreamSpray perfect spray pattern
- GROHE Long-Life finish
- GROHE CoolTouch
- GROHE TurboStat compact cartridge with wax thermoelement
- SpeedClean anti-lime system
- Inner WaterGuide for a longer life
- suitable for instantaneous heaters from 18 kW/h



27 435 000 RAINSHOWER ICON SYSTEM 190 SHOWER SYSTEM WITH THERMOSTAT FOR WALL MOUNTING



SPARE PARTS, November 2009 – now

- 1: Aquadimmer handle (Spare part-nr. 47804000)
- 2: Temperature limiter (Spare part-nr. 47723000)
- 3: Aquadimmer (Spare part-nr. 47364000)
- 4: Water flow (Spare part-nr. 47887000)
- 5: Handle (Spare part-nr. 47803000)
- 6: Fitting ring (Spare part-nr. 47743000)
- 7: Thermostatic compact cartridge 1/2" (Spare part-nr. 47439000)
- 8: Non-return valve (Spare part-nr. 47189000)
- 8.1: Dirt Strainer (Spare part-nr. 0726400M)
- 8.2: Non-return valve (Spare part-nr. 08565000)
- 8.3: O-ring $\varnothing 17 \times \varnothing 2$ (Spare part-nr. 0305500M)
- 9: S-union (Spare part-nr. 12693000)
- 10: Non-return valve (Spare part-nr. 08565000)
- 11: Sliding piece (Spare part-nr. 12140000)
- 12: Dirt strainer (Spare part-nr. 0700200M)
- 13: Fibre seal dia. 12x2 mm (Spare part-nr. 0138900M)
- 14: Dirt strainer (Spare part-nr. 0676800M)
- 15: Compensation disc (Spare part-nr. 27180000)*
- 16: Socket spanner (Spare part-nr. 19332000)*
- 17: GROHE TurboStat cartridge 1/2" (Spare part-nr. 47175000)*
- 18: Scale handle (Spare part-nr. 47811000)*
- 19: Special spanner (Spare part-nr. 19377000)*
- 20: Shower system pipe for retrofitting (Spare part-nr. 48053000)*
- 21: Shower system pipe for retrofitting (Spare part-nr. 48054000)*

* Optional accessories