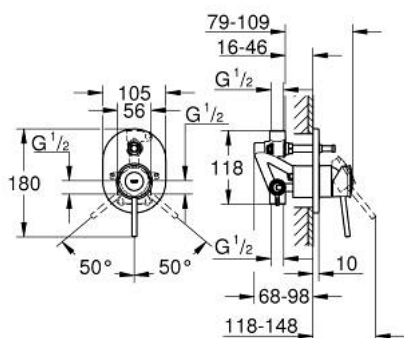


29 047 000 GROHE BAUCLASSIC SINGLE-LEVER BATH/SHOWER MIXER



PRODUCT DESCRIPTION

- Colour: chrome
- concealed installation
- consisting of:
- set for final installation
- concealed body (32 963 001)
- metal lever
- GROHE Long-Life 46 mm ceramic cartridge
- GROHE Long-Life finish
- adjustable flow rate limiter
- adjustable minimum flow rate approx. 2.5 l/min
- automatic diverter: bath/shower
- escutcheon- and shaft-sealing
- optional temperature limiter ref. no. 46 308



29 047 000 **GROHE BAUCLASSIC SINGLE-LEVER BATH/SHOWER MIXER**



SPARE PARTS, December 2009 – now

- 1: Lever (Spare part-nr. 46762000)
- 2: Escutcheon (Spare part-nr. 46772000)
- 3: Shield (Spare part-nr. 09038000)
- 4: Cartridge (Spare part-nr. 46048000)
- 5: Diverter (Spare part-nr. 46737000)
- 6: Temperature limiter (Spare part-nr. 46308000)*
- 7: Extension set (Spare part-nr. 46191000)*
- 8: Extension set (Spare part-nr. 46343000)*

* Optional accessories