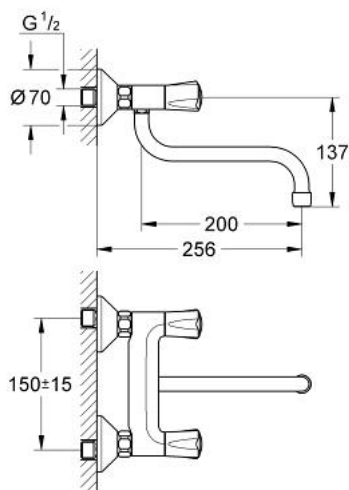


31 066 000 **AVINA TWO HANDLE SINK MIXER**

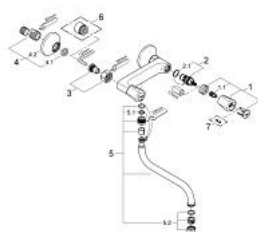


**PRODUCT DESCRIPTION**

- Colour: chrome
- wall mounted
- metal handles
- heat-insulated
- screwable
- Carbodur ceramic headpart 1/2", 180°
- projection 200 mm
- swivel spout
- S-unions
- mousseur
- GROHE Long-Life finish



## 31 066 000 AVINA TWO HANDLE SINK MIXER



**SPARE PARTS**, June 2007 – spareParts.validDate.now

1: handle Atlanta (Order-nr. 45993000)

1.1: Repl. kit f.handle fastening (Order-nr. 0538600M)

2: Ceramic headpart, 1/2" (Order-nr. 45346000)

2.1: O-ring  $\varnothing 18.2 \times \varnothing 1.7$  (Order-nr. 0392400M)

3: Screw joint (Order-nr. 45544000)

4: S-union (Order-nr. 12075000)

4.1: Ball seal dia. 9x6.8 mm (Order-nr. 0138600M)

4.2: Escutcheon (Order-nr. 0221000M)

5: Swivel tube spout (Order-nr. 13051000)

5.1: O-ring dia. 12x2 mm (Order-nr. 0128000M)

5.2: Mousseur (Order-nr. 13928000)

6: Extension 3/4", 20 mm (Order-nr. 0713000M)\*

7: Screw for Costa/Avina products (Order-nr. 48013000)\*

\* Optional accessories