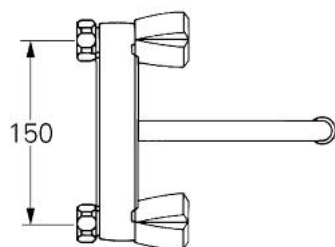
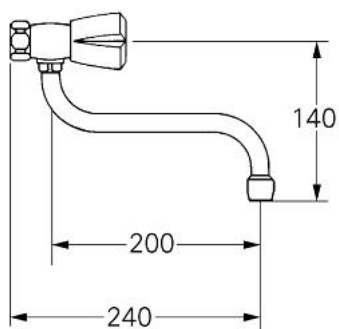


31 182 000 **WALL SINK MIXER 1/2"**

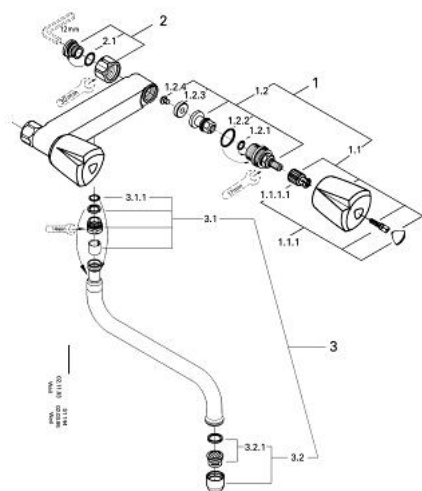


PRODUCT DESCRIPTION

- Colour: chrome
- Trecorn handle
- chrome plated plastic
- heat-insulated, screwed union
- swivel spout
- without connection unions
- mousseur
- GROHE Long-Life finish



31 182 000 WALL SINK MIXER 1/2"



31.182

SPARE PARTS, January 1985 – now

- 1: Headpart 1/2" (Spare part-nr. 45534000)
- 1.1: Costa handle, blue/red (Spare part-nr. 45970000)
- 1.1.1: Repl. kit f.handle fastening (Spare part-nr. 0538600M)
- 1.2: Headpart 1/2" (Spare part-nr. 07146000)
- 1.2.1: O-ring $\varnothing 6 \times \varnothing 2$ (Spare part-nr. 0128300M)
- 1.2.2: O-ring $\varnothing 18.2 \times \varnothing 1.7$ (Spare part-nr. 0392400M)
- 1.2.3: Ball seal dia. 9×6.8 mm (Spare part-nr. 0529100M)
- 2: Screw joint (Spare part-nr. 45044000)
- 2.1: Seal dia. 15×2 mm (Spare part-nr. 0311900M)
- 3: Swivel tube spout (Spare part-nr. 13051000)
- 3.1: O-ring dia. 12×2 mm (Spare part-nr. 0128000M)
- 3.2: Mousseur (Spare part-nr. 13928000)