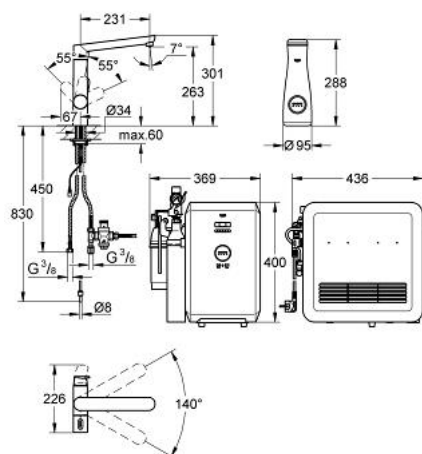


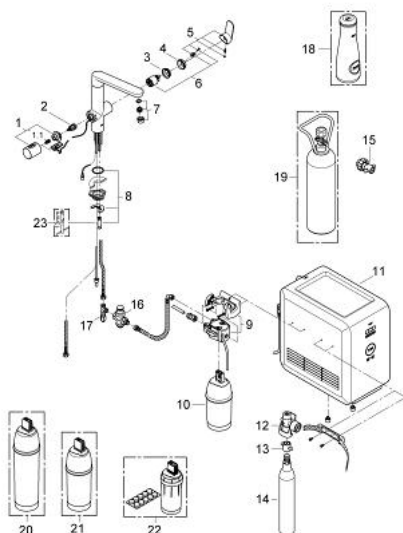
31 346 000 GROHE BLUE K7 PROFESSIONAL STARTER KIT



PRODUCT DESCRIPTION

- Colour: chrome
- consisting of:
- GROHE Blue K7 single-lever sink mixer with filter function
- single hole installation
- separate handle for 3 types of filtered and chilled table water
- still, medium, sparkling
- headpart 1/2"
- GROHE SilkMove 35 mm ceramic cartridge
- adjustable flow rate limiter
- GROHE Long-Life finish
- swivel cast spout
- swivel area 140°
- separate inner water ways for filtered and non-filtered water
- flexible connection hoses
- type of protection IP 55
- CE approved
- main switching power supply 100 - 240 V AC 50/60 Hz with safety extra-low voltage (SELV) 6 V DC to filter change display unit
- adjustable for 600 litre, 1500 litre or 3000 litre filter cartridges
- GROHE Blue Cube
- 270 Watt cooling unit, 230 V, 50 Hz
- GROHE Blue 600 l filter
- GROHE Blue size S filter, filter head with flexible adjustment
- GROHE Blue 425 g CO₂-carbonization bottle
- GROHE Blue carafe
- min. recommended pressure 1.0 bar

31 346 000 GROHE BLUE K7 PROFESSIONAL STARTER KIT



SPARE PARTS, August 2012 – spareParts.validDate.now

- 1: Handle (Order-nr. 46652000)
 - 1.1: Repl. kit f.handle fastening (Order-nr. 0538600M)
 - 2: Headpart (Order-nr. 46713000)
 - 3: Screw coupling (Order-nr. 46460000)
 - 4: Shield (Order-nr. 46116000)
 - 5: Lever (Order-nr. 46729000)
 - 6: Cartridge (Order-nr. 46374000)
 - 7: Mousseur (Order-nr. 48196000)
 - 8: Shank mounting kit (Order-nr. 46671000)
 - 9: filter head (Order-nr. 64508000)
 - 10: Filter (Order-nr. 40404000)
 - 11: Chiller and carbonizer (Order-nr. 40554000)
 - 12: Pressure indicator (Order-nr. 46717000)
 - 12.1: CO₂ adapter (Order-nr. 40962000)
 - 13: Adapter 3/4" x 1/2" (Order-nr. 40453000)
 - 14: Starter kit 425 g CO₂ bottles (4 pieces) (Order-nr. 40422000)
 - 15: Adapter 3/4" x 1/2" (Order-nr. 40454000)
 - 16: Pressure reducing valve (Order-nr. 40452000)
 - 17: Original WAS[®] T-piece 3/8" (Order-nr. 41007000)
 - 18: Glass carafe (Order-nr. 40405000)*
 - 19: Starter kit 2 kg CO₂ bottle (Order-nr. 40423000)*
 - 20: Filter (Order-nr. 40412000)*
 - 21: Filter (Order-nr. 40430000)*
 - 22: Cleaning cartridge (Order-nr. 40434000)*
 - 23: Mounting wrench (Order-nr. 19017000)*
- * Optional accessories