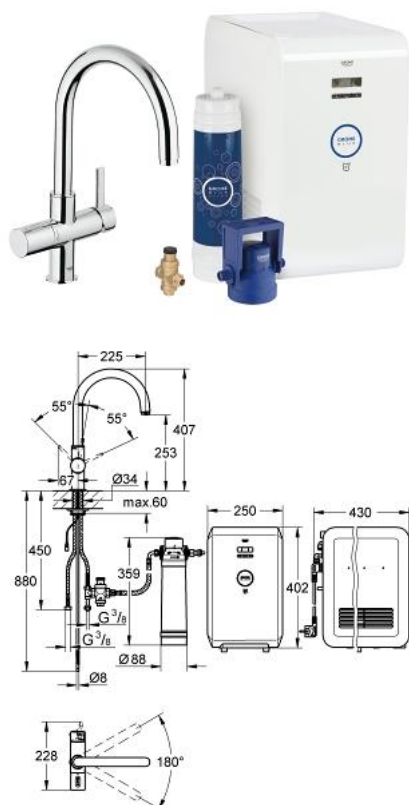


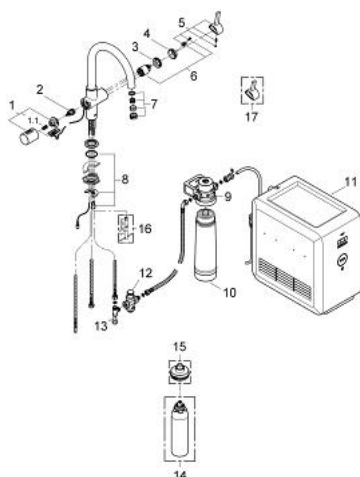
31 387 000 GROHE BLUE ULTRASAFE CHILLED STARTER KIT



PRODUCT DESCRIPTION

- Colour: chrome
- consisting of:
 - GROHE Blue single-lever sink mixer with filter function
 - single hole installation
 - separate handle for 3 types of filtered and chilled table water
 - unchilled, medium chilled, full chilled
 - headpart 1/2"
 - GROHE SilkMove 35 mm ceramic cartridge
 - adjustable flow rate limiter
 - GROHE Long-Life finish
 - swivel cast spout
 - swivel area 140°
 - separate inner water ways for filtered and non-filtered water
 - flexible connection hoses
 - GROHE Blue Pure Cube
 - 180 Watt cooling unit, 230 V, 50 Hz
 - type of protection IP 21
 - 6 V DC to filter change display unit
 - adjustable for 600 litre, 1500 litre or 3000 litre filter cartridges
 - CE approved
 - GROHE Blue UltraSafe 600 l filter for bad quality tap water
 - filter can not be used for well water
 - GROHE Blue UltraSafe filter head
 - min. recommended pressure 2.0 bar

31 387 000 GROHE BLUE ULTRASAFE CHILLED STARTER KIT



SPARE PARTS, May 2013 – now

- 1: Handle (Spare part-nr. 46652000)
- 1.1: Repl. kit f.handle fastening (Spare part-nr. 0538600M)
- 2: Headpart (Spare part-nr. 46713000)
- 3: Screw coupling (Spare part-nr. 46460000)
- 4: Shield (Spare part-nr. 46116000)
- 5: Lever (Spare part-nr. 46653000)
- 6: Cartridge (Spare part-nr. 46374000)
- 7: Mousseur (Spare part-nr. 64374000)
- 8: Shank mounting kit (Spare part-nr. 46249000)
- 9: filter head (Spare part-nr. 40576000)
- 10: Filter (Spare part-nr. 40575000)
- 11: Chiller (Spare part-nr. 40693000)
- 12: Pressure reducing valve (Spare part-nr. 40452000)
- 13: Original WAS T-piece 3/8" (Spare part-nr. 41007000)
- 14: Cleaning cartridge (Spare part-nr. 40434001)*
- 15: Cleaning cartridge adapter (Spare part-nr. 40694000)*
- 16: Mounting wrench (Spare part-nr. 19017000)*
- 17: Shorter mixed water lever (Spare part-nr. 40621000)*

* Optional accessories