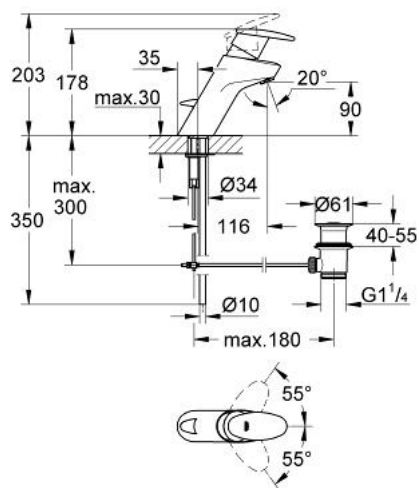


33 134 IP0 TARON SINGLE-LEVER BASIN MIXER

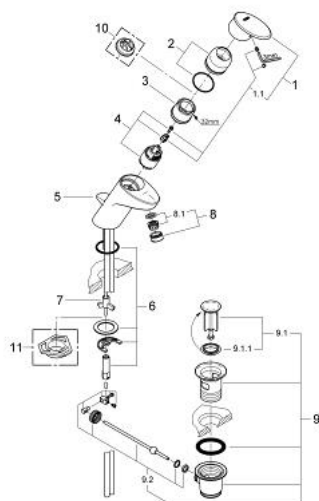


PRODUCT DESCRIPTION

- Colour: chrome/matt chrome
- single hole installation
- GROHE SilkMove 35 mm ceramic cartridge
- adjustable flow rate limiter
- mousseur
- pop-up waste set 1 1/4"
- rapid installation system
- copper pipes
- optional temperature limiter ref. no. 46 375 000
- height 178 mm
- GROHE Long-Life finish



33 134 IP0 TARON SINGLE-LEVER BASIN MIXER



SPARE PARTS, January 2002 – now

- 1: Lever (Spare part-nr. 46371IP0)
- 1.1: Fixing set (Spare part-nr. 46372V00)
- 2: Shield (Spare part-nr. 46373000)
- 3: Ring (Spare part-nr. 03425000)
- 4: Cartridge (Spare part-nr. 46374000)
- 5: Pop-up rod (Spare part-nr. 46376000)
- 6: Shank mounting kit (Spare part-nr. 46122000)
- 7: Compensation ring (Spare part-nr. 03435000)
- 8: Mousseur (Spare part-nr. 13929000)
- 8.1: Repl.kit f.Mousseur M22x1 and M24x1 (Spare part-nr. 45002000)
- 9: Pop-up waste set 1 1/4" (Spare part-nr. 28910000)
- 9.1: Plug (Spare part-nr. 07182000)
- 9.2: Eccentric rod (Spare part-nr. 07052000)
- 10: Temperature limiter (Spare part-nr. 46375000)*
- 11: Support plate (Spare part-nr. 05334000)*

* Optional accessories