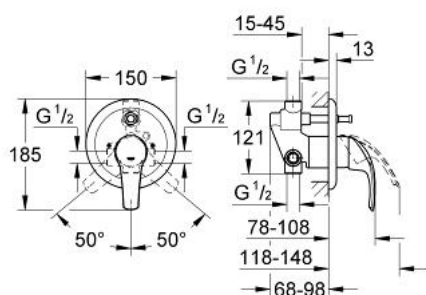


33 305 001 EUROSMART SINGLE-LEVER BATH/SHOWER MIXER

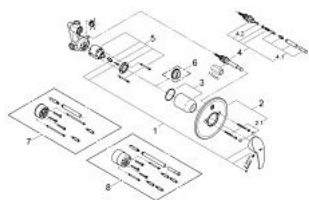


PRODUCT DESCRIPTION

- Colour: chrome
- wall installation
- consisting of:
 - set for final installation (19 450 001)
 - concealed body (33 963)
 - GROHE SilkMove 46 mm ceramic cartridge
 - GROHE Long-Life finish
 - adjustable flow rate limiter
 - adjustable minimum flow rate approx. 2.5 l/min
 - automatic diverter: bath/shower
 - metal lever
 - metal wall escutcheon
 - screwed
 - optional temperature limiter ref. no. 46 308



33 305 001 EUROSMART SINGLE-LEVER BATH/SHOWER MIXER



SPARE PARTS, November 2007 – now

- 1: Lever (Spare part-nr. 46561000)
- 2: Escutcheon (Spare part-nr. 46468000)
- 2.1: Set of screws (Spare part-nr. 46088000)
- 3: Shield (Spare part-nr. 02693000)
- 4: Diverter (Spare part-nr. 46058000)
- 4.1: Diverter knob (Spare part-nr. 46008000)
- 4.2: O-ring $\varnothing 6 \times \varnothing 2$ (Spare part-nr. 0128300M)
- 5: Cartridge (Spare part-nr. 46048000)
- 5.1: Repl. kit f. seal (Spare part-nr. 46209000)
- 6: Temperature limiter (Spare part-nr. 46308000)*
- 7: Extension set (Spare part-nr. 46191000)*
- 8: Extension set (Spare part-nr. 46343000)*

* Optional accessories