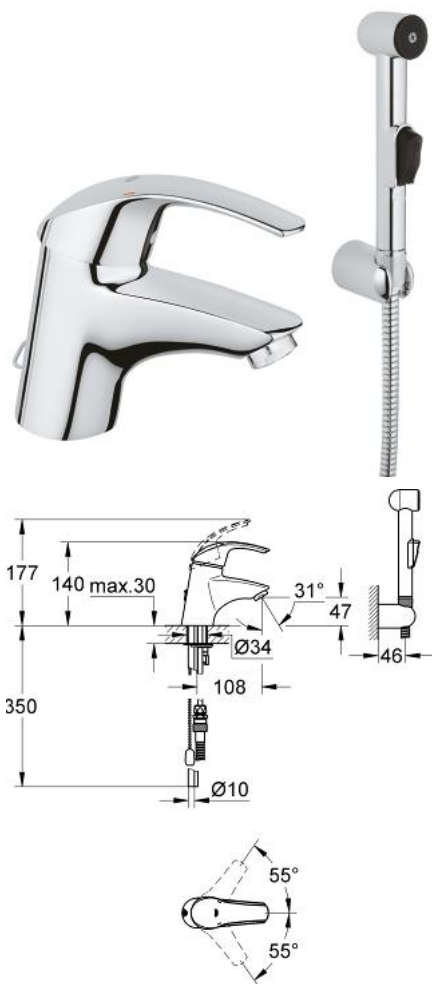


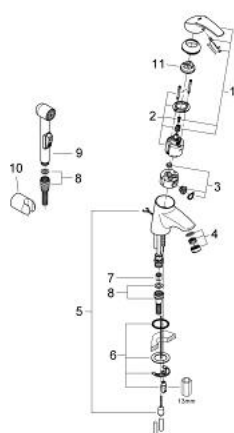
33 462 001 EUROSMART HYGIENICA SINGLE-LEVER BASIN MIXER S-SIZE



PRODUCT DESCRIPTION

- Colour: chrome
- single hole installation
- metal lever
- GROHE SilkMove 46 mm ceramic cartridge
- GROHE Long-Life finish
- adjustable flow rate limiter
- adjustable minimum flow rate approx. 2.5 l/min
- mousseur
- retractable chain
- rapid installation system
- with shower set
- consisting of:
 - hand shower with integrated diverter
 - wall shower holder
 - shower hose
- optional temperature limiter ref. no. 46 375 000

33 462 001 EUROSMART HYGIENICA SINGLE-LEVER BASIN MIXER S-SIZE



SPARE PARTS, November 2005 – now

- 1: Lever (Spare part-nr. 46561000)
- 2: Cartridge (Spare part-nr. 46048000)
- 3: Diverter (Spare part-nr. 46466000)
- 4: Mousseur (Spare part-nr. 13929000)
- 5: Chain support (Spare part-nr. 06815000)
- 5: Shank mounting kit (Spare part-nr. 46447000)
- 6: Shank mounting kit (Spare part-nr. 46249000)
- 7: Non-return valve (Spare part-nr. 08565000)
- 8: Shower hose (Spare part-nr. 28151000)
- 9: Hand shower 1 spray (Spare part-nr. 28343000)
- 10: Wall shower holder (Spare part-nr. 28605000)
- 10: Temperature limiter (Spare part-nr. 46375000)*
- 11: Temperature limiter (Spare part-nr. 46375000)

* Optional accessories