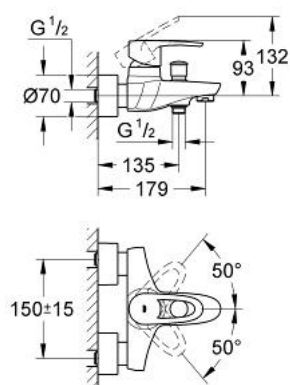


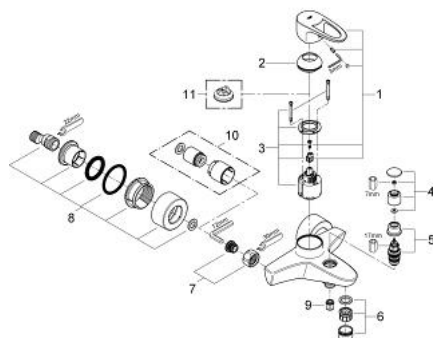
33 553 001 EUROPLUS SINGLE-LEVER BATH/SHOWER MIXER



PRODUCT DESCRIPTION

- Colour: chrome
- wall mounted
- metal lever
- GROHE SilkMove 46 mm ceramic cartridge
- GROHE Long-Life finish
- adjustable flow rate limiter
- adjustable minimum flow rate approx. 2.5 l/min
- automatic diverter: bath/shower
- integrated non-return valve in the shower outlet 1/2"
- mousseur
- covered S-unions with wall sealing
- optional temperature limiter ref. no. 46 375 000
- protected against backflow
- acoustic group I in accordance with DIN 4109

33 553 001 EUROPLUS SINGLE-LEVER BATH/SHOWER MIXER



SPARE PARTS, November 2005 – now

- 1: Lever (Spare part-nr. 46569000)
- 2: Shield (Spare part-nr. 46570000)
- 3: Cartridge (Spare part-nr. 46048000)
- 4: Diverter knob (Spare part-nr. 46571000)
- 5: Diverter (Spare part-nr. 08915000)
- 6: Mousseur (Spare part-nr. 13927000)
- 7: Screw joint (Spare part-nr. 45044000)
- 8: S-union (Spare part-nr. 12693000)
- 9: Non-return valve (Spare part-nr. 08565000)
- 10: Extension set 1/2", 30 mm (Spare part-nr. 46238000)*
- 11: Temperature limiter (Spare part-nr. 46375000)*

* Optional accessories