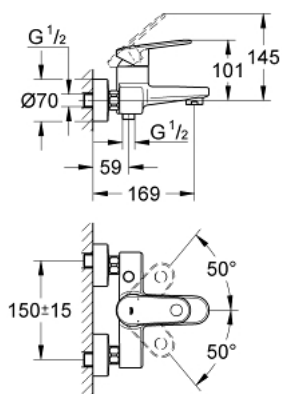
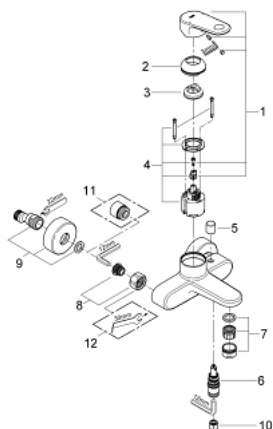


A modern, chrome-finished single-lever kitchen faucet. It features a sleek, curved design with a single lever for water control. A pull-out sprayer is attached to the side of the faucet, and the spout is curved downwards. The faucet is mounted on a circular base plate.



- Colour: chrome
- wall mounted
- metal lever
- GROHE SilkMove 46 mm ceramic cartridge
- temperature limiter
- GROHE Long-Life finish
- adjustable flow rate limiter
- adjustable minimum flow rate approx. 2.5 l/min
- automatic diverter: bath/shower
- SpeedClean mousseur
- integrated non-return valve in the shower outlet 1/2"
- S-unions
- protected against backflow
- min. recommended pressure 1.0 bar

33 553 002 EUROPLUS SINGLE-LEVER BATH/SHOWER MIXER



SPARE PARTS, October 2008 – now

- 1: Lever (Spare part-nr. 46651000)
- 2: Shield (Spare part-nr. 46570000)
- 3: Temperature limiter (Spare part-nr. 46375000)
- 4: Cartridge (Spare part-nr. 46048000)
- 5: Diverter knob (Spare part-nr. 64309000)
- 6: Diverter (Spare part-nr. 65655000)
- 7: Mousseur (Spare part-nr. 13927000)
- 8: Screw joint (Spare part-nr. 45044000)
- 9: S-union (Spare part-nr. 12662000)
- 10: Non-return valve (Spare part-nr. 08565000)
- 11: Extension 3/4\", 20 mm (Spare part-nr. 0713000M)*
- 12: Special spanner (Spare part-nr. 19377000)*

* Optional accessories