

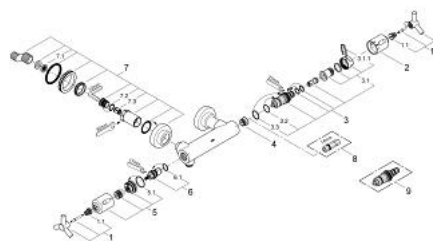
34 010 000 ATRIO THERMOSTAT SHOWER MIXER



PRODUCT DESCRIPTION

- Colour: chrome
- wall mounted
- wax thermoelement
- integrated mixed water shut off
- Carbodur ceramic headpart 1/2", 180°
- volume handle with GROHE EcoButton (economy button with individually adjustable economy stop)
- shower outlet 1/2"
- temperature scale handle with GROHE SafeStop at 38°C
- built-in non return valves
- dirt strainers
- covered S-unions
- protected against backflow
- with Ypsilon handle
- without shower set
- GROHE Water Saving - Less water, perfect flow
- GROHE Long-Life finish
- max. pressure differential 5:1

34 010 000 ATRIO THERMOSTAT SHOWER MIXER



SPARE PARTS, August 2008 – now

- 1: Handle Atrio Ypsilon (Spare part-nr. 47289000)
- 1.1: Repl. kit f.handle fastening (Spare part-nr. 08943000)
- 2: Scale handle (Spare part-nr. 06676000)
- 3: Thermo-element 1/2" (Spare part-nr. 47217000)
- 3.1: Stop ring + regulating nut (Spare part-nr. 47300000)
- 3.1.1: Fixing clamp (Spare part-nr. 0574400M)
- 3.2: O-ring $\varnothing 21 \times \varnothing 2$ (Spare part-nr. 0599900M)
- 3.3: O-ring $\varnothing 24 \times \varnothing 2$ (Spare part-nr. 0119600M)
- 4: Seat for thermostat (Spare part-nr. 01460000)
- 5: Handle for shut-off valve (Spare part-nr. 47311000)
- 5.1: O-ring $\varnothing 31 \times \varnothing 2$ (Spare part-nr. 0354000M)
- 6: Ceramic headpart, 1/2" (Spare part-nr. 45346000)
- 6.1: O-ring $\varnothing 18.2 \times \varnothing 1.7$ (Spare part-nr. 0392400M)
- 7: Screw joint (Spare part-nr. 47323000)
- 7.1: Dirt Strainer (Spare part-nr. 0726400M)
- 7.2: O-ring $\varnothing 17 \times \varnothing 2$ (Spare part-nr. 0305500M)
- 7.3: Non-return valve (Spare part-nr. 08565000)
- 8: Socket spanner (Spare part-nr. 19070000)*
- 9: Thermoelement for changed waterways (Spare part-nr. 47657000)*

* Optional accessories