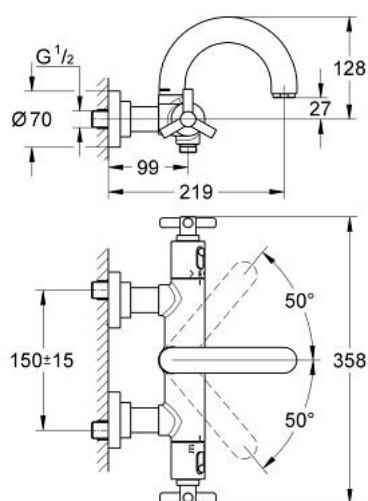


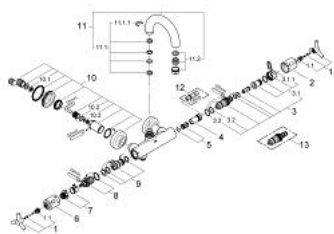
## 34 061 000 ATRIO THERMOSTAT BATH/SHOWER MIXER



### PRODUCT DESCRIPTION

- Colour: chrome
- wall mounted
- wax thermoelement
- with non-rising spindle
- Aquadimmer with multiple function
- shut off and flow control
- diverter bath/shower
- temperature scale handle with GROHE SafeStop at 38°C
- with ceramic disks
- integrated non-return valves and dirt strainers
- swivel tubular spout with mousseur and stop limiter
- covered S-unions
- protected against backflow
- with Ypsilon handle
- without shower set
- GROHE Water Saving - Less water, perfect flow
- GROHE Long-Life finish

## 34 061 000 ATRIO THERMOSTAT BATH/SHOWER MIXER



### SPARE PARTS, November 2007 – now

- 1: Handle Atrio Ypsilon (Spare part-nr. 47289000)
- 1.1: Repl. kit f.handle fastening (Spare part-nr. 08943000)
- 2: Scale handle (Spare part-nr. 06676000)
- 3: Thermo-element 1/2" (Spare part-nr. 47217000)
- 3.1: Stop ring + regulating nut (Spare part-nr. 47300000)
- 3.1.1: Fixing clamp (Spare part-nr. 0574400M)
- 3.2: O-ring  $\varnothing 21 \times \varnothing 2$  (Spare part-nr. 0599900M)
- 3.3: O-ring  $\varnothing 24 \times \varnothing 2$  (Spare part-nr. 0119600M)
- 4: Seat for thermostat (Spare part-nr. 01460000)
- 5: Sound absorber (Spare part-nr. 47398000)
- 6: Handle for shut-off valve (Spare part-nr. 06654000)
- 7: Temperature limiter (Spare part-nr. 47669000)
- 8: Aquadimmer (Spare part-nr. 47364000)
- 9: Water flow (Spare part-nr. 47376000)
- 10: Screw joint (Spare part-nr. 47323000)
- 10.1: Dirt Strainer (Spare part-nr. 0726400M)
- 10.2: O-ring  $\varnothing 17 \times \varnothing 2$  (Spare part-nr. 0305500M)
- 10.3: Non-return valve (Spare part-nr. 08565000)
- 11: Spout (Spare part-nr. 45601000)
- 11.1: Repl.kit f.cast spout (Spare part-nr. 45474000)
- 11.1.1: Safety washer (Spare part-nr. 0585000M)
- 11.2: Mousseur (Spare part-nr. 13927000)
- 12: Socket spanner (Spare part-nr. 19070000)\*
- 13: Thermoelement for changed waterways (Spare part-nr. 47657000)\*

\* Optional accessories