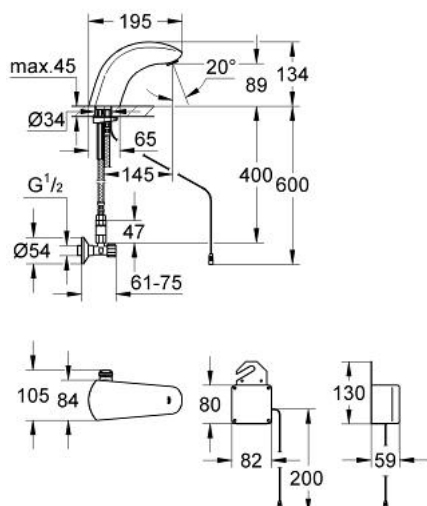


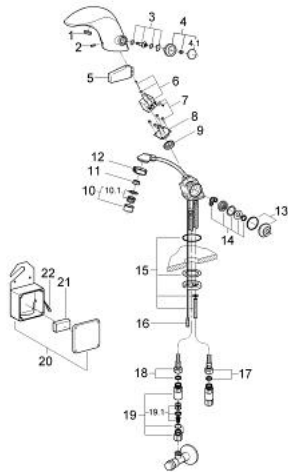
36 145 000 PULSOMAT SURF INFRARED ELECTRONIC BASIN MIXER 1/2" WITH MIXING DEVICE



PRODUCT DESCRIPTION

- Colour: chrome
- battery supply 9 V
- CE approved
- single hole installation
- tap hole diameter 35 mm
- solenoid valve
- flow limiter 6 l/min
- 2 flexible hoses
- dirt strainer
- non-return valve
- 2 angle valves
- housing with 9 V monoblock battery and battery warning
- GROHE Long-Life finish
- type of protection IP 44

36 145 000 PULSOMAT SURF INFRARED ELECTRONIC BASIN MIXER 1/2" WITH MIXING DEVICE



SPARE PARTS, January 1995 – spareParts.validDate.now

- 1: Cap (Order-nr. 43412000)
- 2: Screw dia. 4x52 mm (Order-nr. 43093000)
- 3: Shaft (Order-nr. 43049000)
- 4: Mixing ring (Order-nr. 43096P00)
- 4.1: Cap (Order-nr. 43410000)
- 5: Electronic (Order-nr. 43674000)
- 6: Magnetic coil (Order-nr. 43840000)
- 7: Screw (Order-nr. 4308600M)
- 8: Headpart f. solenoid valve (Order-nr. 43839000)
- 9: Membrane (Order-nr. 43737000)
- 10: Mousseur (Order-nr. 13929000)
- 10.1: Repl.kit f.Mousseur M22x1 and M24x1 (Order-nr. 45002000)
- 11: Flow restrictor (Order-nr. 43284000)
- 12: Ring (Order-nr. 43297000)
- 13: Cover (Order-nr. 43249000)
- 14: Cartridge (Order-nr. 43460000)
- 15: Fixing set (Order-nr. 43039000)
- 16: Cable (Order-nr. 43698000)
- 17: Hose cold (Order-nr. 43372000)
- 18: Hose warm (Order-nr. 43373000)
- 19: Non-return valve (Order-nr. 43431000)
- 19.1: Non-return valve (Order-nr. 42842000)
- 20: Battery body (Order-nr. 43672000)
- 21: Battery (Order-nr. 43823000)
- 22: Cable (Order-nr. 43683000)