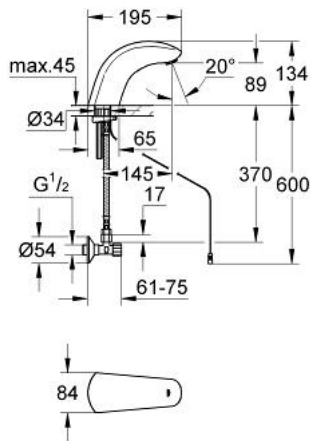


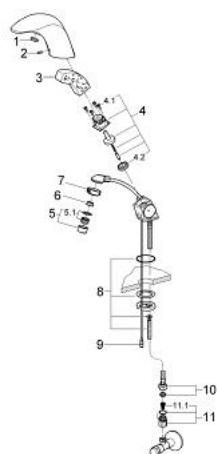
36 148 000 **PULSOMAT SURF RADAR-ELECTRONIC BASIN MIXER 1/2"**
WITHOUT MIXING DEVICE



PRODUCT DESCRIPTION

- Colour: chrome
- single hole installation
- tap hole diameter 35 mm
- power supply 24 V
- CE approved
- solenoid valve
- flow limiter 6 l/min
- flexible connection hose
- dirt strainer
- flow limiter
- 1 angle valve
- without power supply unit
- GROHE Long-Life finish

36 148 000 PULSOMAT SURF RADAR-ELECTRONIC BASIN MIXER 1/2" WITHOUT MIXING DEVICE



SPARE PARTS, January 1995 – now

- 1: Cap (Spare part-nr. 43411000)
- 2: Screw dia. 4x52 mm (Spare part-nr. 43093000)
- 3: Electronic (Spare part-nr. 43673000)
- 4: Magnetic coil (Spare part-nr. 43635000)
- 4.1: Screw (Spare part-nr. 4308600M)
- 4.2: Membrane (Spare part-nr. 43737000)
- 5: Mousseur (Spare part-nr. 13929000)
- 5.1: Repl.kit f.Mousseur M22x1 and M24x1 (Spare part-nr. 45002000)
- 6: Flow restrictor (Spare part-nr. 43284000)
- 7: Ring (Spare part-nr. 43297000)
- 8: Fixing set (Spare part-nr. 43039000)
- 9: Cable (Spare part-nr. 43698000)
- 10: Hose cold (Spare part-nr. 43372000)
- 11: Dirt Strainer (Spare part-nr. 43293000)
- 11.1: Dirt Strainer (Spare part-nr. 4329100M)