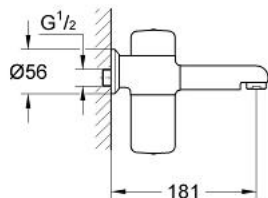


36 161 000 **PULSOACTRON INFRARED ELECTRONIC BASIN MIXER 1/2"**
WITHOUT MIXING DEVICE

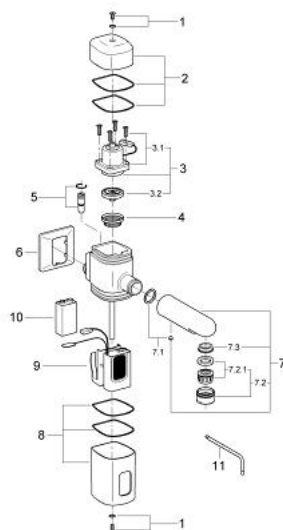


PRODUCT DESCRIPTION

- Colour: chrome
- battery supply 9 V
- CE approved
- wall mounted
- battery warning light
- solenoid valve
- stop valve
- dirt strainer
- flow limiter 6 l/min
- projection 177 - 185 mm
- depending on installation depth
- integrated 9 V battery
- type of protection IP 65
- GROHE Long-Life finish



36 161 000 PULSOACTRON INFRARED ELECTRONIC BASIN MIXER 1/2" WITHOUT MIXING DEVICE



SPARE PARTS, January 1995 – now

- 1: Screw dia. 4x52 mm (Spare part-nr. 43098000)
- 2: Shield (Spare part-nr. 43955000)
- 3: Solenoid valve (Spare part-nr. 43912000)
- 3.1: Headpart f. solenoid valve (Spare part-nr. 43695000)
- 3.2: Membrane (Spare part-nr. 43795000)
- 4: Dirt strainer (Spare part-nr. 43826000)
- 5: Isolating valve (Spare part-nr. 43414000)
- 6: Escutcheon (Spare part-nr. 43245000)
- 7: Spout (Spare part-nr. 43357000)
- 7.1: Screw dia. 4x52 mm (Spare part-nr. 43094000)
- 7.2: Mousseur (Spare part-nr. 13929000)
- 7.2.1: Repl.kit f.Mousseur M22x1 and M24x1 (Spare part-nr. 45002000)
- 7.3: Flow restrictor (Spare part-nr. 43284000)
- 8: Housing electronic (Spare part-nr. 43928000)
- 9: Electronic (Spare part-nr. 43945000)
- 10: Battery (Spare part-nr. 43823000)
- 11: Key (Spare part-nr. 43784000)