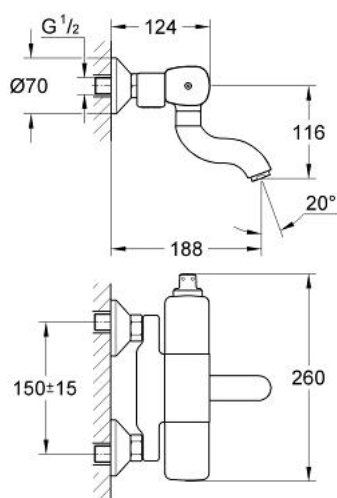


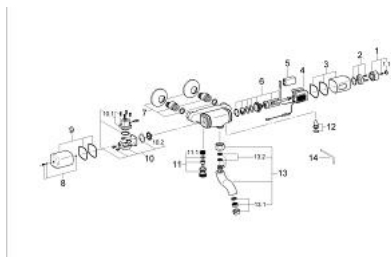
36 164 000 PULSOACTRON INFRARED ELECTRONIC BASIN MIXER 1/2" WITH MIXING DEVICE



PRODUCT DESCRIPTION

- Colour: chrome
- battery supply 9 V
- CE approved
- wall mounted
- battery warning light
- solenoid valve
- non-return valve
- dirt strainers
- temperature limiter
- swivel spout
- flow limiter 7.5 l/min
- projection 200 mm
- integrated 9 V battery
- type of protection IP 65
- GROHE Long-Life finish

36 164 000 **PULSOACTRON INFRARED ELECTRONIC BASIN MIXER 1/2"** **WITH MIXING DEVICE**



SPARE PARTS, January 1995 – now

- 1: Scale handle (Spare part-nr. 42999000)
- 1.1: Cap (Spare part-nr. 43400000)
- 2: Escutcheon (Spare part-nr. 42998000)
- 3: Shield (Spare part-nr. 42997000)
- 4: Electronic (Spare part-nr. 42996000)
- 5: Battery (Spare part-nr. 43823000)
- 6: Cartridge (Spare part-nr. 42995000)
- 7: S-union (Spare part-nr. 42994000)
- 8: Screw dia. 4x52 mm (Spare part-nr. 42993000)
- 9: Shield (Spare part-nr. 42992000)
- 10: Solenoid valve (Spare part-nr. 42991000)
- 10.1: Headpart f. solenoid valve (Spare part-nr. 43695000)
- 10.2: Membrane (Spare part-nr. 43795000)
- 11: Non-return valve (Spare part-nr. 42990000)
- 11.1: Dirt Strainer (Spare part-nr. 4329600M)
- 12: Isolating valve (Spare part-nr. 42989000)
- 13: Spout for Europlus E thermostat (Spare part-nr. 43957000)
- 13.1: Mousseur (Spare part-nr. 43287000)
- 13.2: Repl. kit f. seal (Spare part-nr. 43806000)
- 14: Key (Spare part-nr. 43784000)