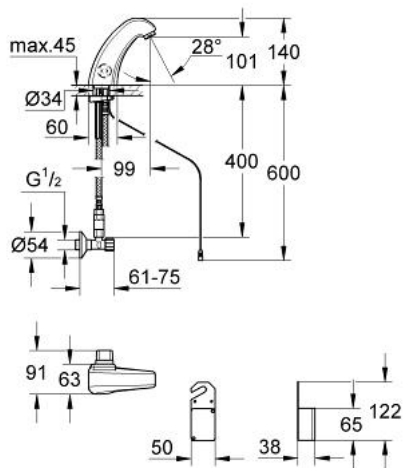


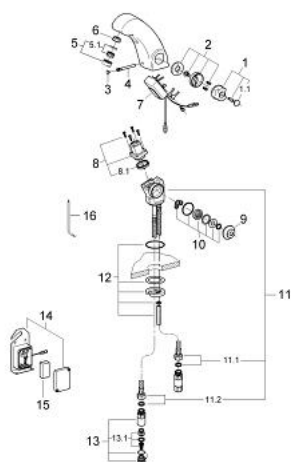
36 165 000 PULSOACTRON INFRARED ELECTRONIC BASIN MIXER 1/2" WITH MIXING DEVICE



PRODUCT DESCRIPTION

- Colour: chrome
- battery supply 9 V
- single hole installation
- CE approved
- tap hole diameter 35 mm
- battery warning light
- solenoid valve
- flow limiter 6 l/min
- flexible connection hoses
- dirt strainer
- non-return valve
- 2 angle valves
- housing with 9 V battery power supply
- type of protection IP 65
- GROHE Long-Life finish

36 165 000 PULSOACTRON INFRARED ELECTRONIC BASIN MIXER 1/2" WITH MIXING DEVICE



SPARE PARTS, February 2004 – now

- 1: Scale handle (Spare part-nr. 42999000)
- 1.1: Cap (Spare part-nr. 43400000)
- 2: Escutcheon (Spare part-nr. 42903000)
- 3: Flush plate (Spare part-nr. 4318500M)
- 4: Fastening set (Spare part-nr. 42904000)
- 5: Mousseur (Spare part-nr. 13929000)
- 5.1: Repl.kit f.Mousseur M22x1 and M24x1 (Spare part-nr. 45002000)
- 6: Flow restrictor (Spare part-nr. 43284000)
- 7: Electronic (Spare part-nr. 42906000)
- 8: Headpart (Spare part-nr. 42914000)
- 8.1: Membrane (Spare part-nr. 42916000)
- 9: Cover (Spare part-nr. 43249000)
- 10: Cartridge (Spare part-nr. 43460000)
- 11: Housing (Spare part-nr. 42931000)
- 11.1: Hose cold (Spare part-nr. 43372000)
- 11.2: Hose warm (Spare part-nr. 43373000)
- 12: Fixing set (Spare part-nr. 43039000)
- 13: Non-return valve (Spare part-nr. 43431000)
- 13.1: Non-return valve (Spare part-nr. 42842000)
- 15: Battery (Spare part-nr. 43823000)
- 16: Housing (Spare part-nr. 42933000)
- 16: Key (Spare part-nr. 43784000)