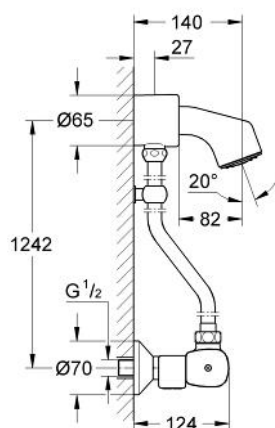


## 36 170 000 **PULSOACTRON INFRARED SHOWER MIXER 1/2"**

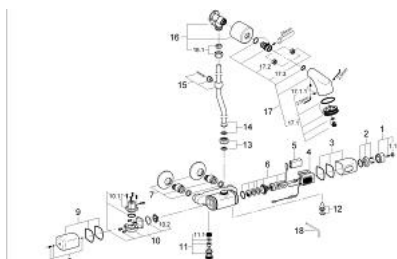


### PRODUCT DESCRIPTION

- Colour: chrome
- with mixture
- battery supply 9 V
- CE approved
- wall mounted
- battery warning light
- solenoid valve
- non-return valve
- dirt strainers
- 2 stop valves
- temperature limiter
- min. recommended pressure 1.7 bar
- S-unions
- integrated 9 V battery
- complete with exposed shower riser 1160 mm
- pipe clamp and shower head with wall flange
- type of protection IP 65
- GROHE Long-Life finish



## 36 170 000 PULSOACTRON INFRARED SHOWER MIXER 1/2"



### SPARE PARTS, February 2004 – spareParts.validDate.now

- 1: Scale handle (Order-nr. 42999000)
- 1.1: Cap (Order-nr. 43400000)
- 2: Escutcheon (Order-nr. 42998000)
- 3: Shield (Order-nr. 42997000)
- 4: Electronic (Order-nr. 42996000)
- 5: Battery (Order-nr. 43823000)
- 6: Cartridge (Order-nr. 42995000)
- 7: S-union (Order-nr. 42994000)
- 8: Screw dia. 4x52 mm (Order-nr. 42993000)
- 9: Shield (Order-nr. 42992000)
- 10: Solenoid valve (Order-nr. 42991000)
- 10.1: Headpart f. solenoid valve (Order-nr. 43695000)
- 10.2: Membrane (Order-nr. 43795000)
- 11: Non-return valve (Order-nr. 42990000)
- 11.1: Dirt Strainer (Order-nr. 4329600M)
- 12: Isolating valve (Order-nr. 42989000)
- 13: Fixing nut (Order-nr. 43312000)
- 14: Shower pipe (Order-nr. 42986000)
- 15: Clip (Order-nr. 36129000)
- 16: Union (Order-nr. 43300000)
- 16.1: Fixing nut (Order-nr. 43299000)
- 18: Sports headshower 1/2" (Order-nr. 28949000)
- 18.1: Spray faceplate (Order-nr. 43697000)
- 18.1.1: Thread pin (Order-nr. 4369900M)
- 18.2: Flow restrictor (Order-nr. 4211400M)
- 18.3: Flow restrictor (Order-nr. 4211500M)
- 18: Key (Order-nr. 43784000)