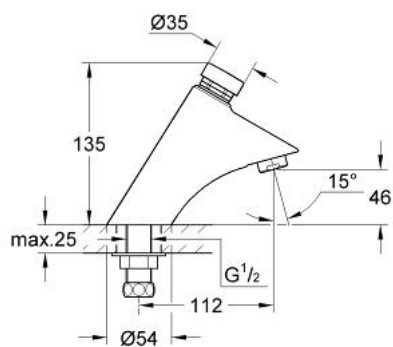


36 175 000 **CONTROPRESS SELF-CLOSING PILLAR TAP 1/2", LOW PRESSURE**

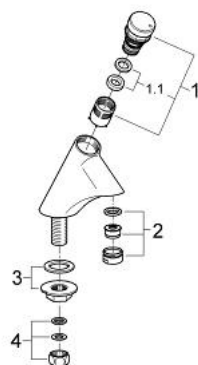


PRODUCT DESCRIPTION

- Colour: chrome
- single hole installation
- union nut for 12 and 14 mm pipe
- GROHE Water Saving - Less water, perfect flow
- GROHE Long-Life finish



36 175 000 **CONTROPRESS SELF-CLOSING PILLAR TAP 1/2", LOW PRESSURE**



SPARE PARTS, January 2000 – now

1: Cartridge (Spare part-nr. 42985000)

1.1: Rings (Spare part-nr. 4282000M)

1.2: Strainer (Spare part-nr. 4271400M)

2: Flow straightener (Spare part-nr. 42703000)

3: Fastening set (Spare part-nr. 43922000)

4: Inlet connection (Spare part-nr. 42694000)