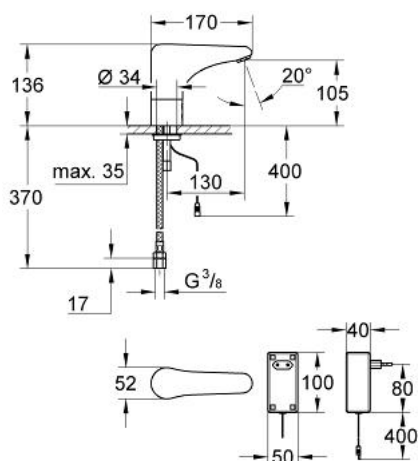


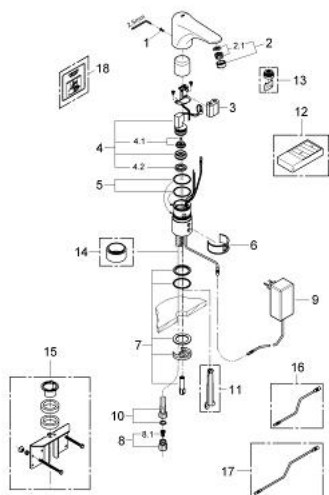
36 219 000 TECTRON INFRARED ELECTRONIC BASIN MIXER 1/2" WITHOUT MIXING DEVICE



PRODUCT DESCRIPTION

- Colour: chrome
- power supply unit - electric power supply
- CE approved
- single hole installation
- safety shutdown circuit
- flow limiter 6 l/min
- flexible connection hose
- dirt strainer
- non-return valve
- power supply unit for plug and socket connection
- type of protection faucet IP 59K
- solenoid valve integrated in housing
- acoustic group I in accordance with DIN 4109
- GROHE Long-Life finish

36 219 000 TECTRON INFRARED ELECTRONIC BASIN MIXER 1/2" WITHOUT MIXING DEVICE



SPARE PARTS, January 1999 – spareParts.validDate.now

- 1: Screw (Order-nr. 4283100M)
 - 2: Mousseur (Order-nr. 42832000)
 - 2.1: Strainer (Order-nr. 42833000)
 - 3: Battery (Order-nr. 42886000)
 - 4: Solenoid valve (Order-nr. 42892000)
 - 4.1: Membrane (Order-nr. 42835000)
 - 4.2: Dirt Strainer (Order-nr. 42798000)
 - 5: Seat washer (Order-nr. 4283600M)
 - 6: Cleaning clip (Order-nr. 42837000)
 - 7: Fixing set (Order-nr. 42841000)
 - 8: Dirt Strainer (Order-nr. 43293000)
 - 8.1: Dirt Strainer (Order-nr. 4329100M)
 - 9: Mains adaptor for 36 232/36 233 (Order-nr. 36220000)
 - 10: Flexible connection hose, 470 (Order-nr. 45484000)
 - 11: Disassembling key
(for Relexa Plus, Relexa Cosmopolitan face plate) (Order-nr. 19132000)*
 - 12: Infra-red remote control (Order-nr. 36206000)*
 - 13: Mousseur (Order-nr. 36133000)*
 - 14: Socket (Order-nr. 36210000)*
 - 15: Rotation lock (Order-nr. 42919000)*
 - 16: Extension cable (Order-nr. 36221000)*
 - 17: Extension cable (Order-nr. 36222000)*
 - 18: Sticker with pictograph (Order-nr. 4217700M)*
- * Optional accessories