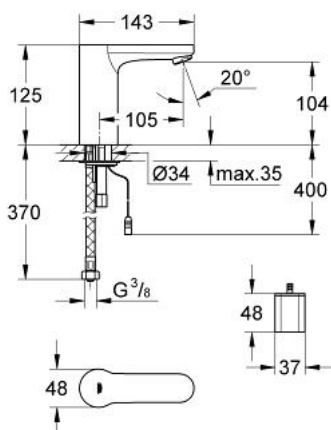


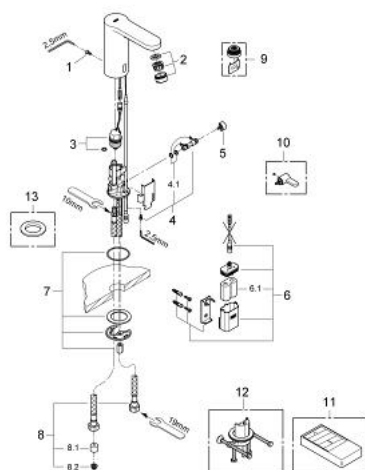
## 36 330 000 EUROSMART COSMOPOLITAN E INFRA-RED ELECTRONIC BASIN MIXER WITH HIDDEN MIXING DEVICE AND ADJUSTABLE TEMPERATURE LIMITER



### PRODUCT DESCRIPTION

- Colour: chrome
- 6 V lithium battery, type CR-P2
- single hole installation
- multistage battery status display
- with integrated solenoid valve
- external battery
- mixing device with adjustable hot water limiter
- rapid installation system
- 7 pre-set programs:
- with 24/72 hours autoflush
- time or user dependent
- with cleaning mode
- safety stop after 60 sec.
- additional functions by remote control:
- adjustable flow time
- adjustable reflection range by remote
- activation of thermal disinfection for 3.5 or 11 min by hand
- fixed built-in static flow limiter on the hose connection
- GROHE Water Saving mousseur 5.7 l/min
- flexible connection hoses
- non-return valve
- dirt strainers
- acoustic group I in accordance with DIN 4109
- type of protection faucet IP 59K
- CE approved
- GROHE Water Saving - Less water, perfect flow
- GROHE Long-Life finish
- min. recommended pressure 1.0 bar

## 36 330 000 EUROSMART COSMOPOLITAN E INFRA-RED ELECTRONIC BASIN MIXER WITH HIDDEN MIXING DEVICE AND ADJUSTABLE TEMPERATURE LIMITER



### SPARE PARTS, August 2010 – spareParts.validDate.now

- 1: Screw (Order-nr. 4283100M)
  - 2: Mousseur (Order-nr. 42832000)
  - 3: Solenoid valve (Order-nr. 42399000)
  - 4: Mixer spindle (Order-nr. 42402000)
  - 4.1: Seat washer (Order-nr. 4284000M)
  - 5: Security cover cap (Order-nr. 42408000)
  - 6: Battery housing with battery (Order-nr. 42393000)
  - 6.1: Battery (Order-nr. 42886000)
  - 7: Mounting set (Order-nr. 42400000)
  - 8: Connection hose (Order-nr. 42403000)
  - 8.1: Non-return valve (Order-nr. 4240400M)
  - 8.2: Filter (Order-nr. 4241300M)
  - 9: Mousseur (Order-nr. 36133000)\*
  - 10: Mixing lever (Order-nr. 42401000)\*
  - 11: Infra-red remote control (Order-nr. 36206000)\*
  - 12: Rotation lock (Order-nr. 36276000)\*
  - 13: Escutcheon (Order-nr. 36370000)\*
- \* Optional accessories