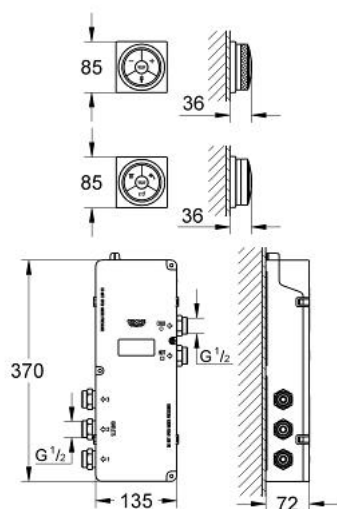


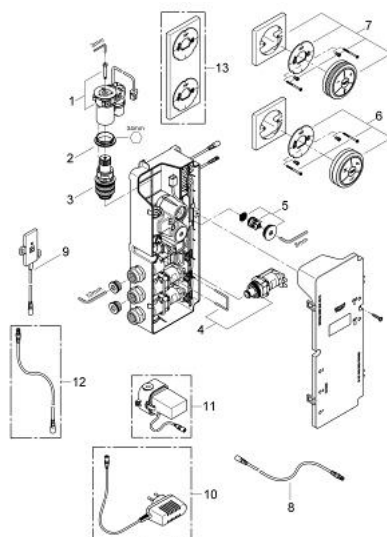
36 344 000 GROHE F-DIGITAL DIGITAL CONTROLLER AND DIGITAL DIVERTER FOR BATH WITH SQUARE BASE PLATE



PRODUCT DESCRIPTION

- Colour: chrome
- including digital thermostat unit
- Digital Controller - intuitive multifunctional operating unit
- - wireless technology
- - temperature and flow control
- - pause-function
- - memory function
- - LED ring incl. warming-up function: visual feedback when preferred temperature is reached
- digital diverter for bath
- - Diverter: head-, hand shower and bath spout
- Wireless technology
- - LED ring (indication of outlet)
- digital thermostat unit (concealed body)
- - warm/cold-supplies 1/2"
- 3 outlets 1/2"
- transceiver unit for Digital Controller and Digital thermostat unit incl. cable 3 m
- GROHE TurboStat digital controlled compact cartridge with wax thermoelement
- default setting configurable during installation:
- - automatic safety shut-off after 20 min
- - GROHE SafeStop at 38°C
- GROHE Long-Life finish
- GROHE Water Saving - Less water, perfect flow
- requires:
- built-in power supply 36 078 000 or plug power supply 65 790 000
- min. recommended pressure 1.0 bar

36 344 000 GROHE F-DIGITAL DIGITAL CONTROLLER AND DIGITAL DIVERTER FOR BATH WITH SQUARE BASE PLATE



SPARE PARTS, February 2011 – spareParts.validDate.now

- 1: Motor (Order-nr. 42337000)
- 2: Fitting ring (Order-nr. 47765000)
- 3: Thermostatic compact cartridge 3/4" (Order-nr. 47881000)
- 4: Solenoid valve (Order-nr. 42340000)
- 5: Non-return valve (Order-nr. 47753000)
- 6: Remote control (Order-nr. 48114000)
- 7: Digital controller with square base plate
remote controller for bath or shower (Order-nr. 36355000)
- 8: connection wire (Order-nr. 47727000)
- 9: Transceiver (Order-nr. 36356000)
- 10: Plug power supply 230 V (Order-nr. 65790000)*
- 11: Plug power supply 110-240 V (Order-nr. 36078000)*
- 12: connection wire (Order-nr. 65815000)*
- 13: Holder plate for Digital Controller &
Digital Diverter (Order-nr. 40548000)*

* Optional accessories