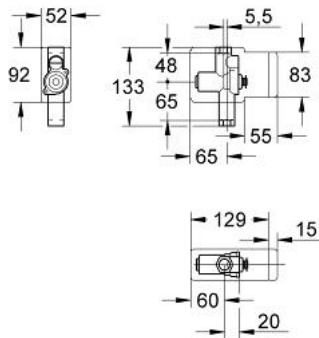


37 017 000 URINAL FLUSH VALVE

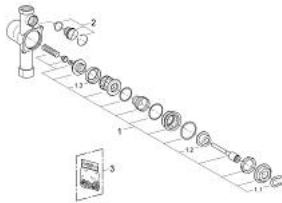


PRODUCT DESCRIPTION

- 1/2"
- concealed installation
- minimum flow pressure 0.5 bar
- integrated stop valve
- flow rate adjustment
- low noise (group II according to German noise specification)
- flush volume adjustable 2.0/4.0/6.0 l
- flush aid
- concealed fitting in noise absorbing polystyrene block
- without wall plate/actuation



37 017 000 URINAL FLUSH VALVE



SPARE PARTS, January 1995 – now

1: Inner part (Spare part-nr. 43812000)

1.1: Safety washer (Spare part-nr. 43091000)

1.2: Membrane (Spare part-nr. 4376200M)

1.3: Sleeve (Spare part-nr. 4376500M)

2: Isolating valve (Spare part-nr. 43392000)

3: Repl. kit f. seal (Spare part-nr. 43719000)*

* Optional accessories