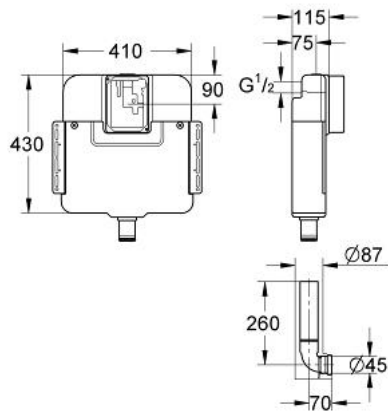


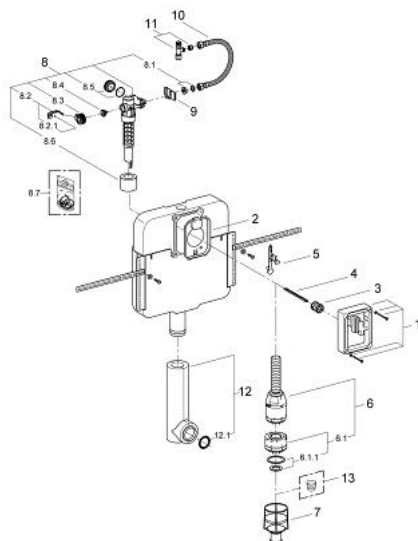
37 050 000 FLUSHING CISTERN FOR WC



PRODUCT DESCRIPTION

- 6 l flush
- concealed installation
- interruptible flush cycle
- made of PE
- connection from top or back
- low noise (group I acc. to German Noise Specification)
- insulated against condensation
- 410 x 120 x 430 mm
- angle valve ½"
- fixing brackets
- flush pipe
- protecting block 45 mm
- without wall plate/actuation
- GROHE Water Saving - Less water, perfect flow

37 050 000 FLUSHING CISTERN FOR WC



SPARE PARTS, November 2008 – spareParts.validDate.now

- 1: Protection cap (Order-nr. 43944000)
 - 2: Protective plate (Order-nr. 43552000)
 - 3: Control Sleeve (Order-nr. 43547000)
 - 4: Actuation Bolt (Order-nr. 43546000)
 - 5: Lever (Order-nr. 43550000)
 - 6: Servo discharge valve (Order-nr. 43486000)
 - 6.1: Outlet piston (Order-nr. 43544000)
 - 6.1.1: Ball seal dia. 9x6.8 mm (Order-nr. 43808000)
 - 7: Valve seat (Order-nr. 43542000)
 - 8: Filling valve (Order-nr. 43537000)
 - 8.1: Dummy plug and escutcheon cap (Order-nr. 37125000)
 - 8.2: Lever (Order-nr. 43734000)
 - 8.2.1: Ball seal dia. 9x6.8 mm (Order-nr. 4377000M)
 - 8.3: Valve head (Order-nr. 43536000)
 - 8.4: Membrane (Order-nr. 4375800M)
 - 8.5: Screw cap (Order-nr. 43735000)
 - 8.6: Valve float, 5 pcs. (Order-nr. 4379100M)
 - 8.7: Throttle (Order-nr. 42356000)
 - 8.8: Repl. kit f. seal (Order-nr. 43722000)*
 - 9: Support device (Order-nr. 43551000)
 - 10: Hose (Order-nr. 43349000)
 - 11: Service valve (Order-nr. 43821000)
 - 12: Flush pipe, concealed (Order-nr. 43908000)
 - 12.1: Seat washer (Order-nr. 4388000M)
 - 13: Flow restrictor (Order-nr. 42074000)
- * Optional accessories