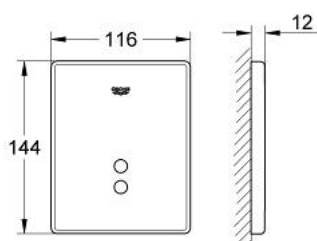


37 324 000 TECTRON SKATE INFRA-RED ELECTRONIC FOR URINAL

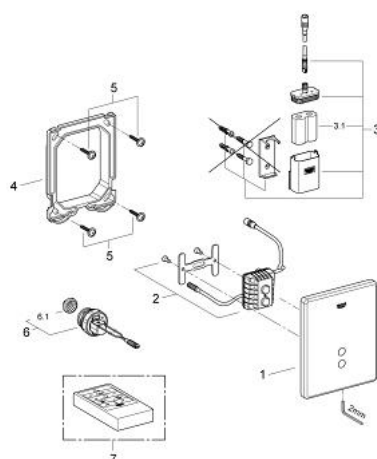


PRODUCT DESCRIPTION

- Colour: chrome
- set for final installation
- for Rapido U or Rapido UMB
- flow pressure min 0.5 bar
- operating pressure max 10 bar
- CE approved
- infra-red control
- GROHE Long-Life battery electronic
- 6 V DC battery supply
- adjustable flush volume
- 24 h flushing can be activated
- with function check lamp/battery check lamp
- cartridge with solenoid valve and dirt strainer
- front plate 116 x 144 mm
- GROHE Long-Life finish



37 324 000 TECTRON SKATE INFRA-RED ELECTRONIC FOR URINAL



SPARE PARTS, September 2006 – now

- 1: Flush plate (Spare part-nr. 42350000)
- 2: Tectron electronic unit (Spare part-nr. 42188000)
- 3: Battery housing with battery (Spare part-nr. 42393000)
- 3.1: Battery (Spare part-nr. 42886000)
- 4: Frame (Spare part-nr. 66845000)
- 5: Screw dia. 4x52 mm (Spare part-nr. 6636200M)
- 6: Solenoid valve (Spare part-nr. 66859000)
- 6.1: Dirt Strainer (Spare part-nr. 6669900M)
- 7: Infra-red remote control (Spare part-nr. 36206000)*

* Optional accessories