

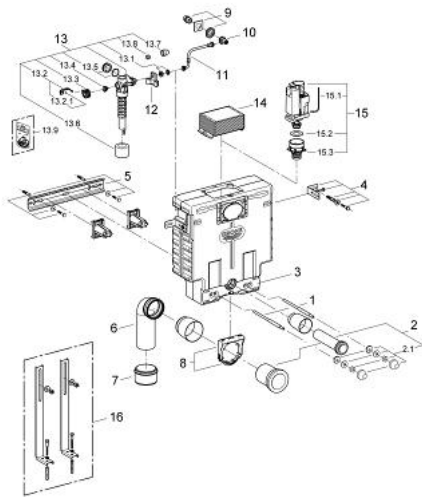
38 415 000 UNISET FOR WC



PRODUCT DESCRIPTION

- with flushing cistern 6 - 9 l
- 0.82 m installation height
- front or top actuation
- sound-insulating EPS module for masonry-in
- rail adaptors for modular fixing
- for single or rail installation
- wall rail with fixing accessories for single installation
- 2 WC fixing bolts
- distance of fixing bolts 180/230 mm
- fixing device for ceramic
- outlet bend Ø 80 mm
- depth adjustable
- inlet and outlet connecting set
- flushing cistern 6 - 9 l
- pneumatic discharge valve offering 3 modes of operation: dual flush or start/stop or single flush
- water supply from left/right or top
- low noise (group I acc. to German Noise Specification)
- insulated against condensation
- ½" water supply connection
- angle valve ½"
- shortable inspection shaft incl. protection during construction phase
- without wall plate/actuation
- GROHE Water Saving - Less water, perfect flow

38 415 000 UNISET FOR WC



SPARE PARTS, April 2008 – spareParts.validDate.now

- 1: Threaded bolt (Order-nr. 4276400M)
- 2: WC inlet and outlet connecting set (Order-nr. 37311K00)
- 2.1: Basin fastening (Order-nr. 43511SH0)
- 2.2: Connector (Order-nr. 37119000)
- 3: Cover plate (Order-nr. 43915000)
- 4: Fastening set, complete, 2 pcs. (Order-nr. 4276300M)
- 5: Rail (Order-nr. 43931000)
- 6: PP-outlet bend Ø 90 mm (Order-nr. 42327000)
- 7: 4" Outlet Adaptor F Rapid SI (Order-nr. 42242000)
- 8: Support for outlet bend (Order-nr. 42243000)
- 9: Water supply (Order-nr. 42234000)
- 10: Service valve (Order-nr. 42235000)
- 11: Overflow Sleeve (Order-nr. 43325000)
- 11.1: Seat washer (Order-nr. 0319100M)
- 12: Support device (Order-nr. 42195000)
- 13: Filling valve (Order-nr. 37095000)
- 13.1: Lever (Order-nr. 43734000)
- 13.1.1: Ball seal dia. 9x6.8 mm (Order-nr. 4377000M)
- 13.2: Valve head (Order-nr. 43536000)
- 13.3: Membrane (Order-nr. 4375800M)
- 13.4: Screw cap (Order-nr. 43735000)
- 13.5: Valve float, 5 pcs. (Order-nr. 4379100M)
- 13.6: Repl. kit f. seal (Order-nr. 43722000)*
- 14: inspection shaft.for flushing cistern (Order-nr. 42326000)
- 15: Discharge valve AV1 complete (Order-nr. 42314000)
- 15.1: pneumatic hose (Order-nr. 42319000)
- 15.2: Ball seal dia. 9x6.8 mm (Order-nr. 42310000)
- 15.3: Valve seat for GD2 (Order-nr. 42315000)
- 16: Support feet (Order-nr. 37304000)*

* Optional accessories