

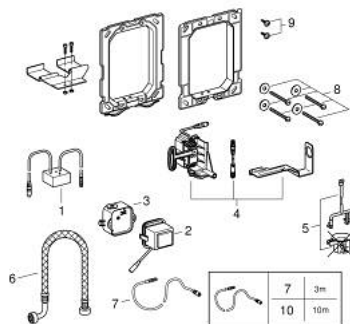
38 778 000 **RADIO ELECTRONIC**



PRODUCT DESCRIPTION

- for an additional wall plate for manual actuation
- for WC
- receiver modul 868,4 MHz
- for support rails for the disabled with radio transmitter of Hewi, Keuco, Lehen, Normbau, Pressalit, AMS, Deubad, Erlau, FRELÜ, FSB
- for flushing cistern GD 2
- for flushing cistern 6 l
- concealed installation
- servo motor
- with transformer 100-230 V AC, 50-60 Hz, 6 V DC
- adjustable flush volume
- adjustable flow time
- 72 h flushing can be activated
- with extension cable, 3.00 m length, for connecting transformer and electronic

38 778 000 **RADIO ELECTRONIC**



SPARE PARTS, May 2023 – now

- 1: Wireless receiver (Spare part-nr. 42336000)
- 2: Transformer (Spare part-nr. 42278000)
- 3: Transformer connecting box (Spare part-nr. 42279000)
- 4: Servo motor (Spare part-nr. 42612000)
- 5: Pop-up rod for servo motor (Spare part-nr. 43306000)
- 6: Hose (Spare part-nr. 43307000)
- 7: Extension cable (Spare part-nr. 36221000)
- 8: Fixing set (Spare part-nr. 4308500M)
- 9: Screw dia. 4x52 mm (Spare part-nr. 6636200M)
- 10: Extension cable (Spare part-nr. 36222000)*

* Optional accessories